



# CORRECTIVE SERVICES

AUSTRALIA

EMBARGO: 11:30AM (CANBERRA TIME) THURS 27 SEPT 2001

## CONTENTS

	<i>page</i>
Notes .....	2
Summary of findings .....	3

### TABLES

<b>1</b> Persons in prison custody .....	6
<b>2</b> Persons in prison custody, by sex and type of prison custody .....	8
<b>3</b> Persons in prison custody, by legal status and sentence type .....	14
<b>4</b> Sentenced receptions into prison custody, by type of sentence ..	18
<b>5</b> Indigenous persons in prison custody, by sex .....	19
<b>6</b> Indigenous persons in prison custody, by legal status and sentence type .....	22
<b>7</b> Persons in periodic detention, by sex .....	26
<b>8</b> Federal sentenced persons in prison custody, by sex .....	28
<b>9</b> Persons in community-based corrections, by sex .....	29
<b>10</b> Persons in community-based corrections, by type of order .....	30

### ADDITIONAL INFORMATION

Explanatory notes .....	31
Appendix .....	35
Glossary .....	36

- For further information about these and related statistics, contact Robert Letheby on Melbourne 03 9615 7381 or the National Information and Referral Service on 1300 135 070.

## NOTES

### FORTHCOMING ISSUES

ISSUE	RELEASE DATE
September 2001	20 December 2001
December 2001	28 March 2002



### ABOUT THIS PUBLICATION

This publication presents information on persons in custody and community-based corrections. The statistics are derived from information collected by the Australian Bureau of Statistics from administrative records held by corrective services agencies in each State and Territory, and from the Federal Attorney-General's Department for details on Federal prisoners. Details are provided for each State and Territory, together with numbers and imprisonment rates by type of custody (i.e. open or secure custody or periodic detention). Information is also presented on prisoner numbers by legal status (sentenced or unsentenced) and by sentence type, for all prisoners and for Indigenous prisoners, together with the number of sentenced receptions into custody and the number of Federal prisoners.

Total imprisonment rates for the March quarter 2001 have been revised in this issue based on September quarter 2000 Estimated Resident Population data (which had not been available at the release of the March quarter 2001 *Corrective Services Australia* publication).

Due to difficulties experienced in the supply of data for the Northern Territory for the March quarter 2001, some March quarter 2001 figures for the Northern Territory have been revised in this issue of the publication.

The 'Rate Per 100,000 Adult Population' section previously published in Table 4 has been discontinued.

The valuable contribution of the Board of Management and the Advisory Group of the National Corrective Services Statistics Unit (NCSSU) to the production of the statistics in this publication is acknowledged.

### SYMBOLS AND OTHER USAGES

ABS	Australian Bureau of Statistics
ERP	Estimated Resident Population
n.a.	not available
n.p.	not published
r	figures or series revised since previous issue
. .	not applicable
—	nil or rounded to zero

Where figures have been rounded discrepancies may occur between the sum of component items and the total.

R.W. Edwards  
Acting Australian Statistician

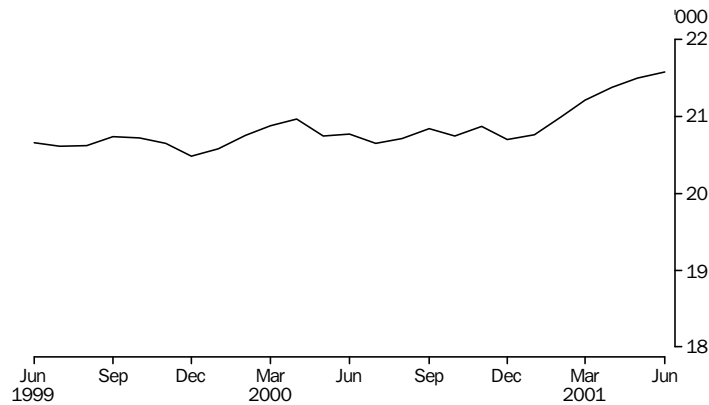
# SUMMARY OF FINDINGS

## NUMBER OF PRISONERS

In the June quarter 2001 the average daily number of prisoners in Australia was 21,487, an increase of 497 (2%) on the March quarter 2001. New South Wales and Queensland recorded the greatest increases in prisoner numbers from the March quarter 2001, both rising by 176 prisoners (2% and 4% respectively). The number of prisoners in Tasmania and the Australian Capital Territory (including Australian Capital Territory prisoners held in New South Wales prisons) decreased by 8 (2%) and 7 (3%) respectively.

The average daily number of prisoners in Australia increased by 659 (3%) over the year from the June quarter 2000. The largest increases from the June quarter 2000 were recorded in New South Wales and Victoria, rising by 362 (5%) and 243 (8%) respectively. Queensland and Tasmania recorded decreases in prisoner numbers of 115 (2%) and 78 (18%) respectively.

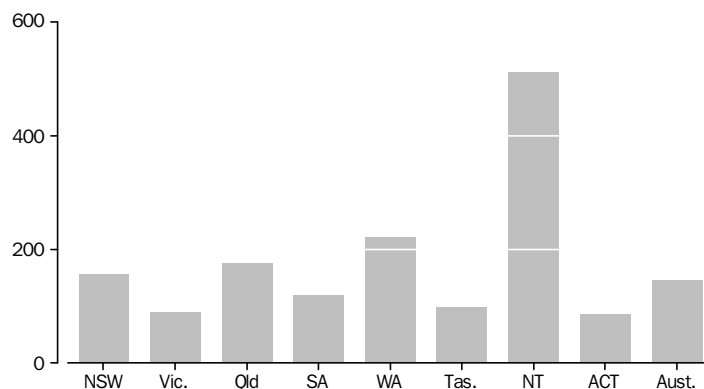
PERSONS IN PRISON CUSTODY—Australia



## RATES PER 100,000 ADULTS

Nationally, the average daily imprisonment rate was 147 prisoners per 100,000 adult population during the June quarter 2001, an increase of 2% since the June quarter 2000. The Northern Territory had the highest imprisonment rate per 100,000 adult population, with a rate of 511, representing an 11% increase since the June quarter 2000. The next highest rates were recorded by Western Australia and Queensland (222 and 175 prisoners per 100,000 adult population respectively).

AVERAGE DAILY IMPRISONMENT RATE(a)



(a) Rate per 100,000 adult population.

## SUMMARY OF FINDINGS *continued*

---

### SEX

Of the average daily number of prisoners in Australia during the June quarter 2001, 20,097 (94%) were males and 1,390 (6%) were females. The proportion of male and female prisoners remained unchanged from the March quarter 2001 to the June quarter 2001.

### TYPE OF CUSTODY

In the June quarter 2001 the average daily number of prisoners in secure prison custody was 15,350 (71%). The remaining 6,137 prisoners (29%) were held in open prison custody. The highest proportions of prisoners held in secure custody were recorded in South Australia (90%) and Victoria (89%). The States/Territories with the lowest proportions of prisoners in secure prison custody were the Australian Capital Territory (including Australian Capital Territory prisoners held in New South Wales prisons) with 49% and New South Wales with 56%. All female prisoners in South Australia, Tasmania and the Northern Territory were held in secure prison custody.

### LEGAL STATUS AND SENTENCE TYPE

On 1 June 2001, there were 21,574 prisoners. Of these, 17,146 (79%) were sentenced and 4,428 (21%) were unsentenced. South Australia had the highest proportion of unsentenced prisoners (35%), followed by the the Australian Capital Territory (including Australian Capital Territory prisoners held in New South Wales prisons) with 31%. The lowest proportions of unsentenced prisoners were recorded in the Northern Territory (16%), Victoria (16%) and Western Australia (17%).

### SENTENCED RECEPTIONS

There were 6,633 sentenced receptions in Australia during the June quarter 2001. New South Wales reported the highest number of sentenced receptions with 2,151 prisoners, followed by 1,584 in Queensland and 1,025 in Victoria.

Of all sentenced receptions in Australia during this quarter, 414 (6%) were for fine default only. This is one third the number that was recorded for the June quarter 2000. The large decrease is primarily the result of changes in Queensland where there has been a 98% decrease between the June quarter 2000 and the June quarter 2001. The highest numbers of these sentenced receptions for fine default only were recorded in Western Australia with 135 (33%) of all sentenced receptions and Tasmania with 119 (29%). It should be noted that persons imprisoned for fine default usually serve a relatively short time in custody.

### INDIGENOUS PRISONERS

On 1 June 2001, there were 4,273 Indigenous prisoners in Australia (20% of the Australian prisoner population). The highest number of Indigenous prisoners was recorded in New South Wales (1,217). The Northern Territory, where Indigenous people comprise the largest proportion of the total population, recorded the highest proportion of Indigenous prisoners (64%).

The national rate of imprisonment for Indigenous persons on 1 June 2001 was 1,801 per 100,000 adult Indigenous population. The corresponding rate for the total adult population of Australia was 147 per 100,000 adult population. The highest rate of imprisonment for Indigenous persons was recorded in Western Australia (3,104 Indigenous persons per 100,000 adult Indigenous population) followed by New South Wales and South Australia (1,865 and 1,742 Indigenous persons per 100,000 adult Indigenous population respectively).

Nationally, the Indigenous rate of imprisonment was 15 times the non-Indigenous rate. The highest ratios of Indigenous to non-Indigenous rates of imprisonment were recorded in Western Australia and South Australia with Indigenous rates of imprisonment 20 and 17 times the non-Indigenous rates respectively.

Further information on the interpretation of statistics on Indigenous persons in prison custody is provided in an Appendix on page 35 of this publication.

### PERIODIC DETENTION

Periodic detention is a form of custody only used in New South Wales and the Australian Capital Territory. Prisoners on periodic detention are required to be held in custody for only two consecutive days each week. There was an average daily number of 1,059 persons in New South Wales and 69 persons in the Australian Capital Territory held in periodic detention during the June quarter 2001.

### PERSONS IN COMMUNITY-BASED CORRECTIONS

In the June quarter 2000 the number of persons in community-based corrections in Australia was 59,190, of whom 81% (47,858) were males.

#### Rates per 100,000 adults

The rate for persons in community-based corrections during the June quarter 2000 was 408 persons per 100,000 adult population. Queensland recorded the highest rate of 750 persons per 100,000 adult population, followed by South Australia and the Australian Capital Territory with 524 and 448 persons per 100,000 adult population respectively. Victoria had the lowest rate of persons in community-based corrections (178 persons per 100,000 adult population).

#### Type of order

The most common orders served for community-based corrections were sentenced probation (48%) followed by fine options (25%). Sentenced probation was the most common order served in each of the jurisdictions, except for Queensland where 55% of the orders were fine options. Only 370 orders (less than 1%) were for bail and 754 (1%) were for restricted movement.

# 1

## PERSONS IN PRISON CUSTODY(a)

Period	NSW(b)	Vic.	Qld	SA	WA	Tas.	NT	ACT in NSW(c)	ACT(d)	Aust.(c)
AVERAGE DAILY NUMBER										
<b>1998</b>	6 516	2 796	4 874	1 403	2 389	302	607	118	37	18 923
<b>1999</b>	7 117	2 945	5 095	1 363	2 903	343	615	129	36	20 416
<b>2000</b>	7 329	3 153	4 848	1 298	3 055	398	633	150	52	20 766
<b>2000</b>										
June quarter	7 346	3 130	4 892	1 312	3 038	429	632	151	49	20 828
September quarter	7 352	3 165	4 728	1 283	3 132	403	617	150	52	20 731
December quarter	7 373	3 245	4 678	1 289	3 097	388	645	157	56	20 769
<b>2001</b>										
March quarter	7 532	3 322	4 601	1 338	3 101	359	r683	155	55	r20 990
June quarter	7 708	3 373	4 777	1 380	3 144	351	697	145	58	21 487
<b>2000</b>										
April	7 397	3 126	4 993	1 322	2 993	450	634	141	49	20 964
May	7 308	3 121	4 875	1 312	3 037	418	636	152	42	20 749
June	7 334	3 142	4 809	1 301	3 083	420	627	160	55	20 771
July	7 320	3 138	4 685	1 284	3 124	415	623	147	58	20 648
August	7 367	3 147	4 734	1 266	3 132	404	613	151	48	20 711
September	7 370	3 212	4 765	1 299	3 140	389	614	152	49	20 838
October	7 321	3 215	4 724	1 282	3 115	400	628	155	59	20 744
November	7 406	3 256	4 711	1 291	3 103	390	655	156	54	20 867
December	7 392	3 263	4 600	1 295	3 072	374	651	160	54	20 700
<b>2001</b>										
January	7 466	3 310	4 534	1 314	3 061	358	667	160	54	20 764
February	7 521	3 316	4 605	1 334	3 100	363	r695	152	62	r20 996
March	7 607	3 338	4 664	1 367	3 141	356	689	154	49	21 212
April	7 640	3 360	4 731	1 379	3 154	356	690	155	66	21 375
May	7 727	3 385	4 784	1 377	3 125	354	698	147	56	21 506
June	7 756	3 373	4 815	1 383	3 153	343	704	134	54	21 580

(a) Includes Work Outreach Camps and Community Custody Centres in Qld.

(b) Persons sentenced to full-time custody in the ACT are held in NSW prisons. These persons are included in the NSW figures, as well as being reported separately under 'ACT in NSW'.

(c) The ACT in NSW figures refer to the persons described in (b) above. The figures are a single count taken on a specific day of the month and are not an average of the daily prisoner population for that month. The figures are a subset of the NSW figures and are NOT included in the totals for Australia.

(d) Refers to unsentenced persons in ACT prison custody—see Explanatory notes, paragraph 12.

# 1

## PERSONS IN PRISON CUSTODY(a) *continued*

<i>Period</i>	<i>NSW(b)</i>	<i>Vic.</i>	<i>Qld</i>	<i>SA</i>	<i>WA</i>	<i>Tas.</i>	<i>NT</i>	<i>ACT in NSW(c)</i>	<i>ACT(d)</i>	<i>Aust.(c)</i>
RATE PER 100,000 ADULT POPULATION										
<b>1998</b>	137.5	78.5	188.2	124.4	177.9	85.0	455.7	50.4	15.8	134.3
<b>1999</b>	148.1	81.4	193.0	120.0	211.6	96.4	453.9	54.7	15.3	142.8
<b>2000</b>	150.6	85.9	180.3	113.7	219.0	111.7	464.6	64.5	22.3	143.3
<b>2000</b>										
June quarter	151.0	85.4	182.2	114.9	218.1	120.4	459.3	64.8	20.9	143.9
September quarter	151.0	86.1	175.5	112.3	224.2	112.8	456.9	64.4	22.4	142.9
December quarter	151.0	87.9	172.7	112.7	220.8	108.5	475.0	67.5	24.0	142.7
<b>2001</b>										
March quarter r	153.7	89.6	169.0	116.8	219.9	100.4	501.8	66.5	23.4	143.7
June quarter	156.8	90.7	174.5	120.1	222.0	97.9	510.6	62.0	24.9	146.5
<b>2000</b>										
April	152.0	85.3	186.0	115.8	214.9	126.4	460.4	60.4	20.9	144.8
May	150.2	85.2	181.6	114.9	218.0	117.2	462.1	65.2	18.1	143.3
June	150.7	85.7	179.1	114.0	221.3	117.8	455.3	68.8	23.8	143.5
July	150.4	85.3	173.9	112.4	223.7	116.2	461.6	63.1	25.1	142.4
August	151.3	85.6	175.8	110.8	224.2	113.1	454.1	64.7	20.8	142.8
September	151.4	87.3	176.9	113.7	224.8	109.0	454.8	65.3	21.2	143.7
October	150.0	87.1	174.4	112.0	222.1	111.8	462.9	66.6	25.4	142.5
November	151.7	88.2	173.9	112.8	221.2	109.1	482.8	66.9	23.3	143.4
December	151.4	88.4	169.8	113.2	219.0	104.6	479.5	68.8	23.1	142.2
<b>2001</b>										
January r	152.4	89.3	166.6	114.7	217.1	100.1	490.1	68.3	22.9	142.1
February r	153.5	89.5	169.2	116.4	219.9	101.5	510.3	65.1	26.4	143.7
March r	155.3	90.0	171.3	119.3	222.8	99.6	505.8	65.9	21.1	145.2
April	155.4	90.3	172.8	120.1	222.7	99.3	505.2	66.2	27.9	145.7
May	157.2	91.0	174.8	119.9	220.7	98.9	511.1	62.5	23.8	146.6
June	157.7	90.7	175.9	120.4	222.7	95.6	515.7	57.2	23.0	147.1

(a) Includes Work Outreach Camps and Community Custody Centres in Qld.

(b) Persons sentenced to full-time custody in the ACT are held in NSW prisons. These persons are included in the NSW figures, as well as being reported separately under 'ACT in NSW'.

(c) The ACT in NSW figures refer to the persons described in (b) above. The figures are a single count taken on a specific day of the month and are not an average of the daily prisoner population for that month. The figures are a subset of the NSW figures and are NOT included in the totals for Australia.

(d) Refers to unsentenced persons in ACT prison custody—see Explanatory notes, paragraph 12.

# 2

## PERSONS IN PRISON CUSTODY, By Sex and Type of Prison Custody

Prison custody and sex	NSW(a)	Vic.	Qld	SA	WA	Tas.	NT	ACT in NSW(b)	ACT(c)	Aust.(b)
AVERAGE DAILY NUMBER										
<b>Males</b>										
<b>Secure prison custody</b>										
<b>1999</b>	3 744	2 465	3 844	1 100	1 758	235	476	39	33	13 654
<b>2000</b>	3 754	2 631	3 721	1 055	1 862	296	494	41	45	13 858
<b>2000</b>										
June quarter	3 765	2 616	3 779	1 072	1 851	319	494	48	43	13 940
September quarter	3 752	2 634	3 634	1 036	1 908	309	468	39	46	13 786
December quarter	3 716	2 683	3 634	1 059	1 882	291	503	36	46	13 815
<b>2001</b>										
March quarter	3 858	2 757	3 563	1 112	1 849	267	r543	47	49	r13 997
June quarter	3 978	2 799	3 680	1 158	1 879	259	530	40	54	14 337
April	3 938	2 779	3 644	1 149	1 867	265	527	45	59	14 228
May	3 994	2 798	3 693	1 155	1 865	263	525	42	52	14 345
June	4 001	2 819	3 702	1 170	1 906	249	538	35	53	14 437
<b>Open prison custody</b>										
<b>1999</b>	2 953	301	943	188	930	91	113	82	..	5 520
<b>2000</b>	3 199	326	834	172	953	81	123	97	..	5 609
<b>2000</b>										
June quarter	3 121	322	816	174	943	87	125	92	..	5 587
September quarter	3 146	337	818	171	980	74	131	99	..	5 657
December quarter	3 194	352	787	161	969	77	124	107	..	5 664
<b>2001</b>										
March quarter	3 196	346	780	147	1 015	73	122	92	..	5 679
June quarter	3 227	331	797	138	1 043	75	149	91	..	5 760
April	3 210	341	795	143	1 060	78	145	97	..	5 772
May	3 230	342	789	138	1 043	72	155	90	..	5 769
June	3 242	310	806	134	1 026	74	146	86	..	5 738
<b>Total prison custody</b>										
<b>1999</b>	6 697	2 766	4 786	1 288	2 688	326	590	121	33	19 174
<b>2000</b>	6 873	2 957	4 555	1 228	2 815	377	617	138	45	19 466
<b>2000</b>										
June quarter	6 886	2 937	4 595	1 246	2 794	406	619	140	43	19 527
September quarter	6 898	2 970	4 452	1 207	2 889	383	599	137	46	19 444
December quarter	6 910	3 035	4 421	1 220	2 851	369	627	143	46	19 479
<b>2001</b>										
March quarter	7 054	3 103	4 342	1 259	2 864	340	r665	140	49	r19 676
June quarter	7 205	3 130	4 476	1 296	2 922	334	679	131	54	20 097
April	7 148	3 120	4 439	1 292	2 927	342	673	142	59	20 000
May	7 224	3 140	4 482	1 293	2 908	336	680	132	52	20 115
June	7 243	3 129	4 508	1 304	2 931	323	685	121	53	20 175

(a) Persons sentenced to full-time custody in the ACT are held in NSW prisons. These persons are included in the NSW figures, as well as being reported separately under 'ACT in NSW'.

(b) The ACT in NSW figures refer to the persons described in (a) above. The figures are a single count taken on a specific day of the month and are not an average of the daily prisoner population for that month. The figures are a subset of the NSW figures and are NOT included in the totals for Australia.

(c) Refers to unsentenced persons in ACT prison custody—see Explanatory notes, paragraph 12.



<i>Prison custody and sex</i>	<i>NSW(a)</i>	<i>Vic.</i>	<i>Qld</i>	<i>SA</i>	<i>WA</i>	<i>Tas.</i>	<i>NT</i>	<i>ACT in NSW(b)</i>	<i>ACT(c)</i>	<i>Aust.(b)</i>
AVERAGE DAILY NUMBER										
<b>Females</b>										
<b>Secure prison custody</b>										
<b>1999</b>	277	146	216	74	142	17	25	—	3	901
<b>2000</b>	288	157	231	70	158	22	16	—	7	949
<b>2000</b>										
June quarter	288	157	245	65	163	24	13	—	6	961
September quarter	288	155	218	75	163	20	18	—	6	943
December quarter	292	161	206	69	154	19	17	1	9	927
<b>2001</b>										
March quarter	296	166	206	79	155	19	19	2	6	947
June quarter	305	193	248	83	144	17	18	—	4	1 013
April	301	187	244	87	150	13	17	1	7	1 006
May	306	196	247	84	143	19	18	—	4	1 017
June	309	196	252	79	139	20	19	—	1	1 016
<b>Open prison custody</b>										
<b>1999</b>	144	33	92	—	73	—	—	8	..	342
<b>2000</b>	168	39	62	—	82	—	—	12	..	351
<b>2000</b>										
June quarter	173	35	52	—	80	—	—	11	..	340
September quarter	167	40	57	—	81	—	—	13	..	345
December quarter	171	49	51	—	92	—	—	13	..	363
<b>2001</b>										
March quarter	182	52	52	—	81	—	—	13	..	367
June quarter	197	50	53	—	77	—	—	14	..	377
April	191	53	48	—	77	—	—	13	..	369
May	197	49	55	—	73	—	—	15	..	374
June	204	48	55	—	82	—	—	13	..	389
<b>Total prison custody</b>										
<b>1999</b>	421	179	309	74	215	17	25	8	3	1 242
<b>2000</b>	456	196	293	70	240	22	16	12	7	1 300
<b>2000</b>										
June quarter	460	192	297	65	244	24	13	11	6	1 301
September quarter	454	195	276	75	243	20	18	13	6	1 288
December quarter	463	210	257	69	246	19	17	14	9	1 290
<b>2001</b>										
March quarter	478	218	259	79	237	19	19	16	6	1 314
June quarter	503	243	300	83	222	17	18	14	4	1 390
April	492	240	292	87	227	13	17	14	7	1 375
May	503	245	302	84	216	19	18	15	4	1 391
June	513	244	307	79	222	20	19	13	1	1 405

(a) Persons sentenced to full-time custody in the ACT are held in NSW prisons. These persons are included in the NSW figures, as well as being reported separately under 'ACT in NSW'.

(b) The ACT in NSW figures refer to the persons described in (a) above. The figures are a single count taken on a specific day of the month and are not an average of the daily prisoner population for that month. The figures are a subset of the NSW figures and are NOT included in the totals for Australia.

(c) Refers to unsentenced persons in ACT prison custody—see Explanatory notes, paragraph 12.

<i>Prison custody and sex</i>	<i>NSW(a)</i>	<i>Vic.</i>	<i>Qld</i>	<i>SA</i>	<i>WA</i>	<i>Tas.</i>	<i>NT</i>	<i>ACT in NSW(b)</i>	<i>ACT(c)</i>	<i>Aust. (b)</i>
AVERAGE DAILY NUMBER										
<b>Persons</b>										
<b>Secure prison custody</b>										
<b>1999</b>	4 021	2 611	4 060	1 174	1 901	252	501	39	36	14 555
<b>2000</b>	4 041	2 788	3 952	1 126	2 020	317	511	41	52	14 807
<b>2000</b>										
June quarter	4 053	2 773	4 025	1 138	2 015	343	507	48	49	14 901
September quarter	4 040	2 789	3 852	1 112	2 071	329	485	39	52	14 729
December quarter	4 008	2 843	3 840	1 129	2 035	311	520	37	56	14 742
<b>2001</b>										
March quarter	4 154	2 923	3 769	1 191	2 004	286	r561	50	55	r14 944
June quarter	4 283	2 992	3 927	1 241	2 023	276	548	41	58	15 350
April	4 239	2 966	3 888	1 236	2 017	278	544	45	66	15 234
May	4 300	2 994	3 940	1 239	2 009	282	543	42	56	15 362
June	4 310	3 015	3 954	1 249	2 045	269	558	35	54	15 453
<b>Open prison custody</b>										
<b>1999</b>	3 097	333	1 035	188	1 003	91	113	90	..	5 861
<b>2000</b>	3 287	365	896	172	1 035	81	123	109	..	5 959
<b>2000</b>										
June quarter	3 293	357	867	174	1 023	87	125	103	..	5 927
September quarter	3 313	377	875	171	1 061	74	131	111	..	6 002
December quarter	3 365	401	838	161	1 061	77	124	120	..	6 027
<b>2001</b>										
March quarter	3 377	398	832	147	1 096	73	122	106	..	6 046
June quarter	3 425	381	849	138	1 120	75	149	105	..	6 137
April	3 401	394	843	143	1 137	78	145	110	..	6 141
May	3 427	391	844	138	1 116	72	155	105	..	6 144
June	3 446	358	861	134	1 108	74	146	99	..	6 127
<b>Total prison custody</b>										
<b>1999</b>	7 117	2 945	5 095	1 363	2 903	343	615	129	36	20 416
<b>2000</b>	7 329	3 153	4 848	1 298	3 055	398	633	150	52	20 766
<b>2000</b>										
June quarter	7 346	3 130	4 892	1 312	3 038	429	632	151	49	20 828
September quarter	7 352	3 165	4 728	1 283	3 132	403	617	150	52	20 731
December quarter	7 373	3 245	4 678	1 289	3 097	388	645	157	56	20 769
<b>2001</b>										
March quarter	7 532	3 322	4 601	1 338	3 101	359	r683	155	55	r20 990
June quarter	7 708	3 373	4 777	1 380	3 144	351	697	145	58	21 487
April	7 640	3 360	4 731	1 379	3 154	356	690	155	66	21 375
May	7 727	3 385	4 784	1 377	3 125	354	698	147	56	21 506
June	7 756	3 373	4 815	1 383	3 153	343	704	134	54	21 580

(a) Persons sentenced to full-time custody in the ACT are held in NSW prisons. These persons are included in the NSW figures, as well as being reported separately under 'ACT in NSW'.

(b) The ACT in NSW figures refer to the persons described in (a) above. The figures are a single count taken on a specific day of the month and are not an average of the daily prisoner population for that month. The figures are a subset of the NSW figures and are NOT included in the totals for Australia.

(c) Refers to unsentenced persons in ACT prison custody—see Explanatory notes, paragraph 12.

# 2

## PERSONS IN PRISON CUSTODY, By Sex and Type of Prison Custody *continued*

<i>Prison custody and sex</i>	<i>NSW(a)</i>	<i>Vic.</i>	<i>Qld</i>	<i>SA</i>	<i>WA</i>	<i>Tas.</i>	<i>NT</i>	<i>ACT in NSW(b)</i>	<i>ACT(c)</i>	<i>Aust.(b)</i>
RATE PER 100,000 ADULT POPULATION										
<b>Males</b>										
<b>Secure prison custody</b>										
<b>1999</b>	158.4	139.3	293.3	198.2	256.5	135.6	659.6	33.5	28.1	193.8
<b>2000</b>	156.7	146.4	278.8	189.0	267.0	170.4	678.6	35.6	39.1	194.0
<b>2000</b>										
June quarter	157.2	145.9	283.6	192.1	265.9	184.0	671.2	41.5	37.5	195.3
September quarter	156.6	146.3	271.9	185.6	273.3	177.8	648.0	33.6	39.8	192.8
December quarter	155.0	148.0	270.0	189.0	268.0	168.0	694.0	32.0	40.0	193.0
<b>2001</b>										
March quarter	r159.8	r151.8	r263.9	r198.4	r262.3	153.7	r747.4	r41.0	r42.2	r194.2
June quarter	164.2	153.5	271.1	206.2	265.4	148.8	728.8	34.9	47.0	198.2
April	162.5	152.4	268.5	204.6	263.7	152.2	725.1	38.5	50.6	196.6
May	164.9	153.5	272.1	205.6	263.5	151.3	721.3	35.9	45.0	198.3
June	165.1	154.6	272.7	208.3	269.2	142.8	740.4	30.3	45.5	199.5
<b>Open prison custody</b>										
<b>1999</b>	124.9	17.0	72.0	33.9	135.7	52.8	157.3	70.3	..	78.3
<b>2000</b>	130.2	18.1	62.5	30.8	136.7	46.8	168.5	84.4	..	78.5
<b>2000</b>										
June quarter	130.3	17.9	61.2	31.2	135.4	50.0	170.2	80.1	..	78.3
September quarter	131.3	18.7	61.2	30.6	140.4	42.7	181.9	85.8	..	79.1
December quarter	132.9	19.5	58.5	28.7	138.2	44.4	171.5	92.8	..	78.9
<b>2001</b>										
March quarter	r132.4	r19.1	r57.7	26.3	r144.0	42.0	r167.9	r80.1	..	r78.8
June quarter	133.2	18.2	58.7	24.6	147.3	42.9	204.8	78.5	..	79.6
April	132.5	18.7	58.6	25.5	149.7	44.6	199.8	83.7	..	79.8
May	133.3	18.8	58.1	24.6	147.4	41.5	213.1	77.6	..	79.7
June	133.8	17.0	59.4	23.9	144.9	42.5	201.2	74.2	..	79.3
<b>Total prison custody</b>										
<b>1999</b>	283.2	156.3	365.2	232.1	392.2	188.4	816.9	103.8	28.1	272.1
<b>2000</b>	286.9	164.5	341.2	219.9	403.7	217.1	847.1	120.1	39.1	272.5
<b>2000</b>										
June quarter	287.5	163.8	344.8	223.3	401.3	233.9	841.4	121.6	37.5	273.6
September quarter	287.8	165.0	333.0	216.2	413.7	220.4	829.9	119.4	39.8	271.9
December quarter	287.4	167.9	328.9	218.0	406.5	212.1	865.9	124.4	40.3	271.4
<b>2001</b>										
March quarter r	292.2	170.9	321.6	224.7	406.3	195.6	915.3	121.1	42.2	273.0
June quarter	297.4	171.7	329.8	230.8	412.8	191.7	933.6	113.4	47.0	277.8
April	295.0	171.2	327.0	230.0	413.5	196.8	924.9	122.2	50.6	276.4
May	298.2	172.2	330.2	230.2	410.9	192.8	934.4	113.5	45.0	278.0
June	299.0	171.6	332.1	232.2	414.1	185.4	941.5	104.5	45.5	278.8

(a) Persons sentenced to full-time custody in the ACT are held in NSW prisons. These persons are included in the NSW figures, as well as being reported separately under 'ACT in NSW'.

(b) The ACT in NSW figures refer to the persons described in (a) above. The figures are a single count taken on a specific day of the month and are not an average of the daily prisoner population for that month. The figures are a subset of the NSW figures and are NOT included in the totals for Australia.

(c) Refers to unsentenced persons in ACT prison custody—see Explanatory notes, paragraph 12.

<i>Prison custody and sex</i>	<i>NSW(a)</i>	<i>Vic.</i>	<i>Qld</i>	<i>SA</i>	<i>WA</i>	<i>Tas.</i>	<i>NT</i>	<i>ACT in NSW(b)</i>	<i>ACT(c)</i>	<i>Aust.(b)</i>
RATE PER 100,000 ADULT POPULATION										
<b>Females</b>										
<b>Secure prison custody</b>										
<b>1999</b>	11.3	7.9	16.3	12.8	20.7	9.2	39.7	—	2.7	12.4
<b>2000</b>	11.6	8.4	17.1	12.1	22.7	11.9	25.9	0.2	5.9	12.9
<b>2000</b>										
June quarter	11.6	8.4	18.1	11.2	23.5	12.9	20.3	—	4.7	13.1
September quarter	11.6	8.3	16.1	12.9	23.3	10.9	28.3	—	5.4	12.8
December quarter	11.8	8.5	15.1	11.9	21.9	10.5	27.6	0.7	8.0	12.6
<b>2001</b>										
March quarter	r11.9	8.8	r15.0	13.5	r22.0	10.3	r29.3	1.9	5.0	12.8
June quarter	12.2	10.2	17.9	14.2	20.4	9.4	28.5	0.2	3.3	13.6
April	12.1	9.9	17.7	14.8	21.2	7.1	26.7	0.6	5.8	13.5
May	12.3	10.3	17.9	14.3	20.2	10.1	28.6	—	3.2	13.7
June	12.4	10.3	18.3	13.5	19.7	10.9	30.2	—	1.0	13.7
<b>Open prison custody</b>										
<b>1999</b>	5.9	1.8	6.9	—	10.6	—	—	6.8	..	4.7
<b>2000</b>	6.8	2.1	4.6	—	11.7	—	—	10.1	..	4.8
<b>2000</b>										
June quarter	7.0	1.9	3.8	—	11.5	—	—	9.4	..	4.6
September quarter	6.7	2.1	4.2	—	11.5	—	—	10.7	..	4.7
December quarter	6.9	2.6	3.8	—	13.1	—	—	11.3	..	4.9
<b>2001</b>										
March quarter	7.3	r2.7	3.8	—	r11.5	—	—	11.3	..	5.0
June quarter	7.9	2.6	3.8	—	10.9	—	—	11.5	..	5.1
April	7.7	2.8	3.5	—	10.8	—	—	11.0	..	5.0
May	7.9	2.6	4.0	—	10.3	—	—	12.6	..	5.0
June	8.2	2.5	4.0	—	11.6	—	—	11.0	..	5.2
<b>Total prison custody</b>										
<b>1999</b>	17.2	9.7	23.2	12.8	31.3	9.2	39.7	6.8	2.7	17.1
<b>2000</b>	18.5	10.5	21.6	12.1	34.5	11.9	25.9	10.3	5.9	17.7
<b>2000</b>										
June quarter	18.6	10.3	22.0	11.2	35.0	12.9	20.3	9.4	4.7	17.7
September quarter	18.4	10.4	20.3	12.9	34.8	10.9	28.3	10.7	5.4	17.5
December quarter	18.7	11.1	18.8	11.9	35.0	10.5	27.6	12.0	8.0	17.5
<b>2001</b>										
March quarter	r19.2	r11.5	r18.9	13.5	r33.5	10.3	r29.3	13.2	5.0	17.8
June quarter	20.2	12.8	21.8	14.2	31.3	9.4	28.5	11.7	3.3	18.7
April	19.7	12.6	21.2	14.8	32.1	7.1	26.7	11.6	5.8	18.5
May	20.2	12.9	21.9	14.3	30.6	10.1	28.6	12.6	3.2	18.7
June	20.6	12.9	22.2	13.5	31.3	10.9	30.2	11.0	1.0	18.9

(a) Persons sentenced to full-time custody in the ACT are held in NSW prisons. These persons are included in the NSW figures, as well as being reported separately under 'ACT in NSW'.

(b) The ACT in NSW figures refer to the persons described in (a) above. The figures are a single count taken on a specific day of the month and are not an average of the daily prisoner population for that month. The figures are a subset of the NSW figures and are NOT included in the totals for Australia.

(c) Refers to unsentenced persons in ACT prison custody—see Explanatory notes, paragraph 12.

<i>Prison custody and sex</i>	<i>NSW(a)</i>	<i>Vic.</i>	<i>Qld</i>	<i>SA</i>	<i>WA</i>	<i>Tas.</i>	<i>NT</i>	<i>ACT in NSW(b)</i>	<i>ACT(c)</i>	<i>Aust.(b)</i>
RATE PER 100,000 ADULT POPULATION										
<b>Persons</b>										
<b>Secure prison custody</b>										
<b>1999</b>	83.6	72.2	153.8	103.4	138.5	70.7	370.1	16.6	15.3	101.8
<b>2000</b>	83.1	75.9	147.0	98.6	144.8	88.9	374.5	17.7	22.3	102.2
<b>2000</b>										
June quarter	83.3	75.7	149.9	99.7	144.6	96.1	368.3	20.5	20.9	102.9
September quarter	83.0	75.8	143.0	97.3	148.3	92.0	359.6	16.6	22.4	101.6
December quarter	82.1	77.0	141.8	98.6	145.1	86.9	383.4	16.0	24.0	101.3
<b>2001</b>										
March quarter	r84.8	r78.9	r138.5	r103.9	r142.2	r80.0	r412.2	r21.2	23.4	r102.3
June quarter	87.1	80.4	143.5	108.1	142.9	77.1	401.6	17.4	24.9	104.6
April	86.2	79.7	142.0	107.6	142.5	77.6	398.8	19.4	27.9	103.9
May	87.5	80.5	143.9	107.9	141.8	78.7	397.6	17.7	23.8	104.7
June	87.7	81.0	144.5	108.7	144.4	75.0	408.5	15.0	23.0	105.4
<b>Open prison custody</b>										
<b>1999</b>	64.4	9.2	39.2	16.6	73.1	25.7	83.8	38.2	..	41.0
<b>2000</b>	67.6	9.9	33.3	15.1	74.2	22.8	90.0	46.8	..	41.1
<b>2000</b>										
June quarter	67.7	9.7	32.3	15.2	73.4	24.3	91.0	44.3	..	40.9
September quarter	68.1	10.2	32.5	15.0	76.0	20.8	97.3	47.8	..	41.4
December quarter	68.9	10.9	30.9	14.0	75.7	21.6	91.5	51.5	..	41.4
<b>2001</b>										
March quarter	r68.9	r10.7	r30.6	12.9	r77.7	20.4	r89.6	r45.3	..	r41.4
June quarter	69.7	10.2	31.0	12.0	79.1	20.8	109.1	44.6	..	41.8
April	69.2	10.6	30.8	12.5	80.3	21.7	106.4	46.9	..	41.9
May	69.7	10.5	30.8	12.0	78.8	20.2	113.5	44.8	..	41.9
June	70.1	9.6	31.5	11.7	78.2	20.7	107.2	42.2	..	41.8
<b>Total prison custody</b>										
<b>1999</b>	148.1	81.4	193.0	120.0	211.6	96.4	453.9	54.7	15.3	142.8
<b>2000</b>	150.6	85.9	180.3	113.7	219.0	111.7	464.6	64.5	22.3	143.3
<b>2000</b>										
June quarter	151.0	85.4	182.2	114.9	218.1	120.4	459.3	64.8	20.9	143.9
September quarter	151.0	86.1	175.5	112.3	224.2	112.8	456.9	64.4	22.4	142.9
December quarter	151.0	87.9	172.7	112.7	220.8	108.5	475.0	67.5	24.0	142.7
<b>2001</b>										
March quarter	r153.7	r89.6	r169.0	r116.8	r219.9	r100.4	r501.8	r66.5	23.4	r143.7
June quarter	156.8	90.7	174.5	120.1	222.0	97.9	510.6	62.0	24.9	146.5
April	155.4	90.3	172.8	120.1	222.7	99.3	505.2	66.2	27.9	145.7
May	157.2	91.0	174.8	119.9	220.7	98.9	511.1	62.5	23.8	146.6
June	157.7	90.7	175.9	120.4	222.7	95.6	515.7	57.2	23.0	147.1

(a) Persons sentenced to full-time custody in the ACT are held in NSW prisons. These persons are included in the NSW figures, as well as being reported separately under 'ACT in NSW'.

(b) The ACT in NSW figures refer to the persons described in (a) above. The figures are a single count taken on a specific day of the month and are not an average of the daily prisoner population for that month. The figures are a subset of the NSW figures and are NOT included in the totals for Australia.

(c) Refers to unsentenced persons in ACT prison custody—see Explanatory notes, paragraph 12.

# 3

## PERSONS IN PRISON CUSTODY, By Legal Status and Sentence Type

Legal status and sentence type	NSW(a)	Vic.	Qld	SA	WA	Tas.	NT	ACT in NSW(b)	ACT(c)	Aust.(b)
NUMBER ON FIRST DAY OF MONTH										
<b>Unsentenced</b>										
<b>1999(d)</b>	1 321	451	616	277	377	56	91	3	41	3 231
<b>2000(d)</b>	1 495	459	702	364	451	73	160	3	54	3 755
<b>2000</b>										
June quarter(d)	1 509	471	694	368	453	93	178	4	54	3 819
September quarter(d)	1 483	435	707	342	500	65	165	1	54	3 750
December quarter(d)	1 518	451	746	401	428	54	151	4	53	3 802
<b>2001</b>										
March quarter(d)	1 630	458	875	445	480	60	169	8	63	4 181
June quarter(d)	1 706	535	904	499	515	61	120	3	58	4 398
April	1 649	530	892	500	515	64	132	4	51	4 333
May	1 740	542	908	507	493	60	117	3	65	4 432
June	1 728	534	912	490	536	60	111	2	57	4 428
<b>Sentenced</b>										
<b>Fine default only</b>										
<b>1999(d)</b>	1	5	234	43	71	21	20	2	..	395
<b>2000(d)</b>	3	3	193	3	55	13	14	—	1	285
<b>2000</b>										
June quarter(d)	5	2	246	—	55	7	11	—	..	326
September quarter(d)	3	2	120	—	58	14	17	—	1	216
December quarter(d)	3	1	118	1	54	19	16	—	4	217
<b>2001</b>										
March quarter(d)	2	—	12	1	48	20	r18	—	1	r103
June quarter(d)	4	1	4	3	45	27	20	—	—	103
April	2	—	4	2	67	8	23	—	1	107
May	5	1	2	3	35	24	19	—	—	89
June	4	2	5	3	32	50	18	—	—	114
<b>Other sentenced</b>										
<b>1999(d)</b>	5 796	2 482	4 213	1 043	2 438	257	497	125	..	16 725
<b>2000(d)</b>	5 842	2 680	3 910	941	2 529	258	459	147	..	16 619
<b>2000</b>										
June quarter(d)	5 847	2 659	3 948	963	2 500	261	449	147	..	16 627
September quarter(d)	5 875	2 713	3 817	953	2 567	271	440	149	..	16 637
December quarter(d)	5 869	2 787	3 793	906	2 611	265	473	153	..	16 703
<b>2001</b>										
March quarter(d)	5 890	2 849	3 721	886	2 560	239	r490	147	..	r16635
June quarter(d)	6 015	2 846	3 805	890	2 586	230	556	143	..	16 927
April	5 987	2 849	3 722	871	2 593	236	553	152	..	16 811
May	6 000	2 828	3 851	887	2 576	257	540	144	..	16 939
June	6 058	2 860	3 843	912	2 588	197	574	133	..	17 032

(a) Persons sentenced to full-time custody in the ACT are held in NSW prisons. These persons are included in the NSW figures, as well as being reported separately under 'ACT in NSW'.

(b) The ACT in NSW figures refer to the persons described in (a) above. The figures are a subset of the NSW figures and are NOT included in the totals for Australia.

(c) Refers to unsentenced persons in ACT prison custody—see Explanatory notes, paragraph 12.

(d) Figures for the quarter and year for first day of the month counts are calculated as a simple average—see Explanatory notes, paragraph 5.

# 3

## PERSONS IN PRISON CUSTODY, By Legal Status and Sentence Type *continued*

<i>Legal status and sentence type</i>	<i>NSW(a)</i>	<i>Vic.</i>	<i>Qld</i>	<i>SA</i>	<i>WA</i>	<i>Tas.</i>	<i>NT</i>	<i>ACT in NSW(b)</i>	<i>ACT(c)</i>	<i>Aust.(b)</i>
NUMBER ON FIRST DAY OF MONTH										
<b>Total sentenced</b>										
<b>1999(d)</b>	5 797	2 487	4 447	1 086	2 509	278	517	127	..	17 120
<b>2000(d)</b>	5 845	2 683	4 103	944	2 584	271	473	147	1	16 904
<b>2000</b>										
June quarter(d)	5 852	2 661	4 195	963	2 555	268	459	147	..	16 953
September quarter(d)	5 878	2 716	3 938	953	2 625	285	457	149	1	16 853
December quarter(d)	5 872	2 788	3 911	907	2 665	284	490	153	4	16 920
<b>2001</b>										
March quarter(d)	5 892	2 850	3 733	887	2 608	259	r508	147	1	r16 738
June quarter(d)	6 019	2 847	3 809	893	2 630	257	576	143	—	17 031
April	5 989	2 849	3 726	873	2 660	244	576	152	1	16 918
May	6 005	2 829	3 853	890	2 611	281	559	144	—	17 028
June	6 062	2 862	3 848	915	2 620	247	592	133	—	17 146
<b>Total</b>										
<b>1999(d)</b>	7 118	2 939	5 063	1 363	2 886	334	608	129	41	20 351
<b>2000(d)</b>	7 340	3 141	4 804	1 307	3 035	344	633	150	55	20 659
<b>2000</b>										
June quarter(d)	7 361	3 132	4 888	1 330	3 008	361	638	151	54	20 772
September quarter(d)	7 361	3 151	4 645	1 295	3 125	350	622	150	55	20 603
December quarter(d)	7 390	3 239	4 657	1 307	3 093	337	641	157	57	20 722
<b>2001</b>										
March quarter(d)	7 522	3 308	4 608	1 332	3 089	319	r678	155	64	r20 919
June quarter(d)	7 724	3 382	4 713	1 392	3 145	319	696	146	58	21 428
April	7 638	3 379	4 618	1 373	3 175	308	708	156	52	21 251
May	7 745	3 371	4 761	1 397	3 104	341	676	147	65	21 460
June	7 790	3 396	4 760	1 405	3 156	307	703	135	57	21 574

(a) Persons sentenced to full-time custody in the ACT are held in NSW prisons. These persons are included in the NSW figures, as well as being reported separately under 'ACT in NSW'.

(b) The ACT in NSW figures refer to the persons described in (a) above. The figures are a subset of the NSW figures and are NOT included in the totals for Australia.

(c) Refers to unsentenced persons in ACT prison custody—see Explanatory notes, paragraph 12.

(d) Figures for the quarter and year for first day of the month counts are calculated as a simple average—see Explanatory notes, paragraph 5.

# 3

## PERSONS IN PRISON CUSTODY, By Legal Status and Sentence Type *continued*

<i>Legal status and sentence type</i>	<i>NSW(a)</i>	<i>Vic.</i>	<i>Qld</i>	<i>SA</i>	<i>WA</i>	<i>Tas.</i>	<i>NT</i>	<i>ACT in NSW(b)</i>	<i>ACT(c)</i>	<i>Aust.(b)</i>
<b>RATE PER 100,000 ADULT POPULATION</b>										
<b>Unsentenced</b>										
<b>1999(d)</b>	27.5	12.5	23.4	24.4	27.5	15.8	67.4	0.4	17.5	22.6
<b>2000(d)</b>	30.7	12.5	26.1	31.8	32.3	20.4	117.0	1.5	23.0	25.9
<b>2000</b>										
June quarter(d)	31.0	12.8	25.8	32.2	32.5	26.0	129.5	1.7	23.2	26.4
September quarter(d)	30.5	11.8	26.3	29.9	35.8	18.1	122.0	0.3	23.3	25.9
December quarter(d)	31.1	12.2	27.5	35.0	30.5	15.0	111.5	1.9	22.9	26.1
<b>2001</b>										
March quarter(d)	r33.3	12.4	r32.1	38.9	r34.1	16.7	r124.3	3.3	r27.1	r28.6
June quarter(d)	34.7	14.4	33.0	43.4	36.3	17.1	87.9	1.3	24.6	30.0
April	33.5	14.2	32.6	43.5	36.4	17.9	96.7	1.7	21.7	29.5
May	35.4	14.6	33.2	44.1	34.8	16.7	85.7	1.3	27.7	30.2
June	35.1	14.4	33.3	42.7	37.9	16.7	81.3	0.9	24.3	30.2
<b>Sentenced</b>										
<b>Fine default only</b>										
<b>1999(d)</b>	—	0.1	8.8	3.8	5.2	6.0	14.8	0.7	..	2.8
<b>2000(d)</b>	0.1	0.1	7.2	0.2	3.9	3.7	10.5	—	0.5	2.0
<b>2000</b>										
June quarter(d)	0.1	0.1	9.2	—	3.9	2.1	7.7	—	..	2.3
September quarter(d)	0.1	0.1	4.5	—	4.1	4.0	12.8	—	0.3	1.5
December quarter(d)	0.1	—	4.4	0.1	3.8	5.3	12.0	—	1.7	1.5
<b>2001</b>										
March quarter(d)	—	—	0.5	0.1	3.4	5.7	r13.2	—	0.4	r0.7
June quarter(d)	0.1	—	0.1	0.2	3.2	7.6	14.6	—	0.1	0.7
April	—	—	0.1	0.2	4.7	2.2	16.8	—	0.4	0.7
May	0.1	—	0.1	0.3	2.5	6.7	13.9	—	—	0.6
June	0.1	0.1	0.2	0.3	2.3	14.0	13.2	—	—	0.8
<b>Other sentenced</b>										
<b>1999(d)</b>	120.6	68.6	159.6	91.8	177.7	72.2	366.9	53.2	..	117.0
<b>2000(d)</b>	120.1	73.0	145.4	82.4	181.3	72.2	336.5	63.1	..	114.7
<b>2000</b>										
June quarter(d)	120.2	72.5	147.1	84.3	179.4	73.2	325.8	63.2	..	114.9
September quarter(d)	120.7	73.8	141.7	83.4	183.8	75.9	325.7	64.1	..	114.7
December quarter(d)	120.2	75.5	140.0	79.1	186.1	74.1	348.7	65.7	..	114.8
<b>2001</b>										
March quarter(d) r	120.2	76.9	136.7	77.3	181.6	66.7	360.0	63.0	..	113.9
June quarter(d)	122.3	76.5	139.0	77.5	182.6	64.2	407.0	61.0	..	115.4
April	121.8	76.6	136.0	75.8	183.1	65.9	405.0	64.8	..	114.6
May	122.0	76.0	140.7	77.2	181.9	71.7	395.5	61.4	..	115.5
June	123.2	76.9	140.4	79.4	182.8	55.0	420.4	56.7	..	116.1

(a) Persons sentenced to full-time custody in the ACT are held in NSW prisons. These persons are included in the NSW figures, as well as being reported separately under 'ACT in NSW'.

(b) The ACT in NSW figures refer to the persons described in (a) above. The figures are a subset of the NSW figures and are NOT included in the totals for Australia.

(c) Refers to unsentenced persons in ACT prison custody—see Explanatory notes, paragraph 12.

(d) Figures for the quarter and year for first day of the month counts are calculated as a simple average—see Explanatory notes, paragraph 5.



# 3

## PERSONS IN PRISON CUSTODY, By Legal Status and Sentence Type *continued*

<i>Legal status and sentence type</i>	<i>NSW(a)</i>	<i>Vic.</i>	<i>Qld</i>	<i>SA</i>	<i>WA</i>	<i>Tas.</i>	<i>NT</i>	<i>ACT in NSW(b)</i>	<i>ACT(c)</i>	<i>Aust.(b)</i>
RATE PER 100,000 ADULT POPULATION										
<b>Total sentenced</b>										
<b>1999(d)</b>	120.6	68.7	168.4	95.6	182.9	78.2	381.6	54.0	..	119.7
<b>2000(d)</b>	120.2	73.1	152.6	82.6	185.2	76.0	347.1	63.1	0.5	116.7
<b>2000</b>										
June quarter(d)	120.3	72.6	156.3	84.3	183.4	75.3	333.6	63.2	..	117.1
September quarter(d)	120.8	73.8	146.2	83.4	187.9	79.9	338.5	64.1	0.3	116.2
December quarter(d)	120.3	75.5	144.4	79.2	190.0	79.4	360.8	65.7	1.7	116.3
<b>2001</b>										
March quarter(d)	r120.3	r76.9	r137.1	r77.4	r185.0	r72.4	r373.3	r63.0	0.4	r114.6
June quarter(d)	122.4	76.5	139.2	77.7	185.8	71.8	421.6	61.0	0.1	116.1
April	121.8	76.6	136.1	76.0	187.8	68.1	421.9	64.8	0.4	115.3
May	122.1	76.0	140.8	77.5	184.4	78.4	409.4	61.4	—	116.1
June	123.3	76.9	140.6	79.7	185.0	68.9	433.6	56.7	—	116.9
<b>Total</b>										
<b>1999(d)</b>	148.1	81.2	191.8	120.1	210.4	94.0	449.1	55.1	17.5	142.4
<b>2000(d)</b>	150.9	85.6	178.7	114.5	217.6	96.4	464.1	64.6	23.5	142.6
<b>2000</b>										
June quarter(d)	151.3	85.5	182.1	116.5	215.9	101.3	463.1	65.0	23.2	143.5
September quarter(d)	151.2	85.7	172.5	113.3	223.7	98.1	460.5	64.4	23.6	142.1
December quarter(d)	151.4	87.8	171.9	114.2	220.5	94.4	472.3	67.5	24.6	142.4
<b>2001</b>										
March quarter(d) r	153.5	89.2	169.3	116.3	219.0	89.1	497.6	66.3	27.5	143.2
June quarter(d)	157.1	90.9	172.2	121.2	222.1	89.0	509.5	62.2	24.7	146.1
April	155.3	90.8	168.7	119.5	224.2	86.0	518.6	66.5	22.2	144.9
May	157.5	90.6	173.9	121.6	219.2	95.2	495.1	62.7	27.7	146.3
June	158.4	91.3	173.9	122.3	222.9	85.7	514.9	57.5	24.3	147.1

(a) Persons sentenced to full-time custody in the ACT are held in NSW prisons. These persons are included in the NSW figures, as well as being reported separately under 'ACT in NSW'.

(b) The ACT in NSW figures refer to the persons described in (a) above. The figures are a subset of the NSW figures and are NOT included in the totals for Australia.

(c) Refers to unsentenced persons in ACT prison custody—see Explanatory notes, paragraph 12.

(d) Figures for the quarter and year for first day of the month counts are calculated as a simple average—see Explanatory notes, paragraph 5.

# 4

## SENTENCED RECEPTIONS INTO PRISON CUSTODY, By Type of Sentence

Sentence type	NSW	Vic.(a)	Qld	SA	WA	Tas.	NT	ACT in NSW(b)	ACT(c)	Aust.(b)
NUMBER										
<b>Fine default only</b>										
<b>1999</b>	44	47	4 696	1 712	644	267	939	3	..	8 349
<b>2000</b>	75	29	3 290	130	537	162	378	—	41	4 642
<b>2000</b>										
June quarter	14	12	934	2	140	23	98	—	..	1 223
September quarter	21	9	813	19	136	45	103	1	29	1 175
December quarter	25	3	215	10	131	57	92	—	12	545
<b>2001</b>										
March quarter	18	—	29	16	188	64	93	—	11	419
June quarter	18	4	18	9	135	119	93	—	18	414
April	8	1	4	2	32	45	20	—	6	118
May	7	1	3	5	47	24	39	—	6	132
June	3	2	11	2	56	50	34	—	6	164
<b>Other sentenced</b>										
<b>1999</b>	8 293	3 959	10 854	1 537	3 373	610	896	115	..	29 522
<b>2000</b>	7 917	4 012	8 872	1 156	3 552	588	768	—	..	26 865
<b>2000</b>										
June quarter	1 917	1 029	2 374	297	861	150	178	44	..	6 806
September quarter	1 793	1 019	2 120	241	965	170	159	38	..	6 467
December quarter	2 093	1 045	1 704	279	861	137	202	51	..	6 321
<b>2001</b>										
March quarter	1 924	899	1 555	278	892	100	184	44	..	5 832
June quarter	2 133	1 021	1 566	321	851	118	209	31	..	6 219
April	647	309	517	91	260	44	62	12	..	1 930
May	755	367	580	120	321	33	81	8	..	2 257
June	731	345	469	110	270	41	66	11	..	2 032
<b>Total sentenced</b>										
<b>1999</b>	8 337	4 006	15 550	3 249	4 017	877	1 835	118	..	37 871
<b>2000</b>	7 992	4 041	12 162	1 286	4 089	750	1 146	—	41	31 507
<b>2000</b>										
June quarter	1 931	1 041	3 308	299	1 001	173	276	44	..	8 029
September quarter	1 814	1 028	2 933	260	1 101	215	262	39	29	7 642
December quarter	2 118	1 048	1 919	289	992	194	294	51	12	6 866
<b>2001</b>										
March quarter	1 942	899	1 584	294	1 080	164	277	44	11	6 251
June quarter	2 151	1 025	1 584	330	986	237	302	31	18	6 633
April	655	310	521	93	292	89	82	12	6	2 048
May	762	368	583	125	368	57	120	8	6	2 389
June	734	347	480	112	326	91	100	11	6	2 196

(a) Victorian figures do not include prisoners whose status changed from unsentenced to sentenced during the period.

(b) Prior to the September quarter 2000, all persons sentenced to full-time custody in the ACT were held in NSW prisons. The figures are a subset of the NSW figures and are NOT included in the totals for Australia—see Explanatory notes, paragraph 12.

(c) In the September quarter 2000 the Australian Capital Territory commenced detaining sentenced, fine default only prisoners in the Territory's centre for unsentenced persons. These figures are not included in the NSW figures but ARE included in the totals for Australia.

# 5

## INDIGENOUS PERSONS IN PRISON CUSTODY, By Sex(a)(b)(c)

Sex	NSW(d)	Vic.	Qld	SA	WA	Tas.	NT	ACT in NSW(d)(e)	ACT(f)	Aust.(e)
NUMBER ON FIRST DAY OF MONTH										
<b>Males</b>										
1999(g)	n.a.	115	1 044	191	883	36	430	n.a.	6	n.a.
2000(g)	1 032	124	999	185	881	42	386	7	6	3 656
<b>2000</b>										
June quarter(g)	1 051	126	1 027	196	894	39	385	7	6	3 724
September quarter(g)	1 025	123	962	191	888	46	371	8	4	3 609
December quarter(g)	1 017	125	959	193	885	43	393	11	5	3 621
<b>2001</b>										
March quarter(g)	1 026	135	907	210	916	39	r418	9	7	r3 668
June quarter(g)	1 077	135	1 004	215	961	38	424	9	7	3 861
April	1 061	131	966	209	965	37	428	8	6	3 803
May	1 084	137	1 017	220	963	38	402	9	9	3 870
June	1 086	138	1 030	215	954	38	441	9	7	3 909
<b>Females</b>										
1999(g)	n.a.	8	71	14	94	2	17	n.a.	1	n.a.
2000(g)	111	11	76	13	95	1	11	3	1	319
<b>2000</b>										
June quarter(g)	107	11	80	11	98	1	9	2	1	319
September quarter(g)	106	12	69	18	88	—	12	4	—	307
December quarter(g)	121	11	67	15	97	1	12	4	1	326
<b>2001</b>										
March quarter(g)	131	12	67	17	103	1	12	3	3	347
June quarter(g)	137	14	84	17	97	2	12	3	1	364
April	142	13	84	17	107	2	12	4	1	378
May	137	15	82	16	82	2	14	3	1	349
June	131	15	86	18	101	2	10	3	1	364
<b>Persons</b>										
1999(g)	n.a.	122	1 116	205	977	37	447	n.a.	7	n.a.
2000(g)	1 143	134	1 075	199	977	43	398	10	6	3 974
<b>2000</b>										
June quarter(g)	1 158	137	1 108	207	991	40	395	9	7	4 042
September quarter(g)	1 131	135	1 031	209	977	46	383	12	5	3 916
December quarter(g)	1 138	137	1 027	208	982	44	406	15	6	3 947
<b>2001</b>										
March quarter(g)	1 157	147	974	227	1 019	41	r430	12	10	r4 005
June quarter(g)	1 214	150	1 088	232	1 057	40	436	12	8	4 224
April	1 203	144	1 050	226	1 072	39	440	12	7	4 181
May	1 221	152	1 099	236	1 045	40	416	12	10	4 219
June	1 217	153	1 116	233	1 055	40	451	12	8	4 273

- (a) Some rates and ratios in this table have not been published—see Explanatory notes, paragraph 21.
- (b) Persons in custody are asked their Indigenous status during reception into custody—see Explanatory notes, paragraphs 10–11.
- (c) See Appendix - Interpretation of Indigenous Statistics.
- (d) Numbers of Indigenous persons for NSW prior to September 1999 are unavailable—see Explanatory notes, paragraph 9.
- (e) Persons sentenced to full-time custody in the ACT are held in NSW prisons. The figures are a subset of the NSW figures and are NOT included in the totals for Australia—see Explanatory notes, paragraph 12.
- (f) Refers to unsentenced persons in ACT prison custody—see Explanatory notes, paragraph 12. From 2000 this may include persons sentenced for fine default only.
- (g) Figures for the quarter and year for first day of the month counts are calculated as a simple average—see Explanatory notes, paragraph 5.

Sex	NSW(d)	Vic.	Qld	SA	WA	Tas.	NT	ACT in NSW(d)(e)	ACT(f)	Aust.(e)
RATE PER 100,000 ADULT INDIGENOUS POPULATION										
<b>Males</b>										
<b>1999(g)</b>	n.a.	1 727.9	3 504.6	3 178.8	5 662.1	814.4	2 772.1	n.a.	610.3	n.a.
<b>2000(g)</b>	3 390.3	1 814.2	3 228.3	3 024.9	5 489.3	939.5	2 461.2	780.1	605.7	3 278.1
<b>2000</b>										
June quarter(g)	3 453.8	1 841.0	3 320.1	3 193.5	5 567.7	863.8	2 408.3	n.p.	n.p.	3 330.4
September quarter(g)	3 367.3	1 797.1	3 107.9	3 117.3	5 534.4	1 011.4	2 406.1	n.p.	n.p.	3 245.4
December quarter(g)	3 339.9	1 836.1	3 100.3	3 144.6	5 513.7	959.8	2 553.3	n.p.	n.p.	3 255.9
<b>2001</b>										
March quarter(g)	3 282.9	1 937.7	2 847.4	3 359.5	5 568.1	850.8	r2649.4	n.p.	n.p.	r3 205.7
June quarter(g)	3 446.1	1 942.5	3 154.1	3 434.1	5 841.7	814.8	2 683.1	n.p.	780.1	3 383.3
April	3 394.9	1 880.3	3 033.7	3 343.5	5 868.0	800.3	2 710.6	n.p.	638.3	3 332.7
May	3 468.5	1 966.4	3 193.9	3 519.4	5 855.9	822.0	2 545.9	n.p.	957.4	3 391.4
June	3 474.9	1 980.8	3 234.7	3 439.4	5 801.2	822.0	2 792.9	n.p.	744.7	3 425.6
<b>Females</b>										
<b>1999(g)</b>	n.a.	108.3	218.8	211.3	566.2	36.0	100.4	n.a.	98.0	n.a.
<b>2000(g)</b>	332.5	148.6	225.5	193.4	557.8	19.0	68.8	273.5	64.4	264.7
<b>2000</b>										
June quarter(g)	320.9	160.4	238.6	158.6	571.0	n.p.	55.5	n.p.	n.p.	264.0
September quarter(g)	319.9	169.8	205.9	259.5	516.4	n.p.	76.1	n.p.	n.p.	255.4
December quarter(g)	365.1	160.4	200.0	216.2	569.0	n.p.	76.1	n.p.	n.p.	271.7
<b>2001</b>										
March quarter(g)	384.3	167.1	194.5	243.4	588.9	n.p.	72.4	n.p.	n.p.	281.6
June quarter(g)	402.0	199.6	242.7	238.7	550.9	40.4	72.4	n.p.	91.7	295.4
April	417.7	181.1	242.7	238.7	609.8	40.4	72.4	n.p.	91.7	307.1
May	403.0	208.9	236.9	224.7	467.3	40.4	84.4	n.p.	91.7	283.5
June	385.3	208.9	248.4	252.8	575.6	40.4	60.3	n.p.	91.7	295.7
<b>Persons</b>										
<b>1999(g)</b>	n.a.	900.7	1 791.2	1 613.2	3 030.2	412.8	1 402.7	n.a.	339.2	n.a.
<b>2000(g)</b>	1 794.3	966.9	1 663.6	1 521.4	2 945.2	464.0	1 234.7	510.1	317.2	1 713.7
<b>2000</b>										
June quarter(g)	1 818.6	986.1	1 714.4	1 582.0	2 989.9	431.8	1 202.4	n.p.	n.p.	1 738.6
September quarter(g)	1 776.7	969.3	1 595.7	1 599.8	2 945.7	488.9	1 211.3	n.p.	n.p.	1 693.0
December quarter(g)	1 787.2	983.7	1 589.0	1 589.6	2 962.8	474.7	1 282.9	n.p.	n.p.	1 706.6
<b>2001</b>										
March quarter(g)	1 772.6	1 039.1	1 465.6	1 700.1	2 997.8	424.7	r1329.2	n.p.	n.p.	r1 688.3
June quarter(g)	1 860.0	1 057.9	1 637.6	1 732.5	3 110.5	414.2	1 345.6	n.p.	410.3	1 780.9
April	1 843.6	1 017.9	1 579.9	1 690.1	3 153.7	407.3	1 359.0	n.p.	344.7	1 762.6
May	1 871.2	1 074.4	1 653.7	1 764.9	3 074.3	417.7	1 284.9	n.p.	492.4	1 778.6
June	1 865.1	1 081.5	1 679.2	1 742.4	3 103.7	417.7	1 393.0	n.p.	393.9	1 801.4

- (a) Some rates and ratios in this table have not been published—see Explanatory notes, paragraph 21.
- (b) Persons in custody are asked their Indigenous status during reception into custody—see Explanatory Notes, paragraphs 10–11.
- (c) See Appendix - Interpretation of Indigenous Statistics.
- (d) Numbers of Indigenous persons for NSW prior to September 1999 are unavailable—see Explanatory notes, paragraph 9.
- (e) Persons sentenced to full-time custody in the ACT are held in NSW prisons. The figures are a subset of the NSW figures and are NOT included in the totals for Australia—see Explanatory notes, paragraph 12.
- (f) Refers to unsentenced persons in ACT prison custody—see Explanatory notes, paragraph 12. From 2000 this may include persons sentenced for fine default only.
- (g) Figures for the quarter and year for first day of the month counts are calculated as a simple average—see Explanatory notes, paragraph 5.

# 5

## INDIGENOUS PERSONS IN PRISON CUSTODY, By Sex(a)(b)(c) *continued*

Sex	ACT in									
	NSW(d)	Vic.	Qld	SA	WA	Tas.	NT	NSW(d)(e)	ACT(f)	Aust.(e)
<b>RATIO OF INDIGENOUS TO NON-INDIGENOUS RATES OF IMPRISONMENT</b>										
<b>Males</b>										
1999(g)	n.a.	11.5	12.1	15.9	21.2	4.9	10.4	n.a.	23.4	n.a.
2000(g)	13.7	11.5	12.0	15.9	19.5	5.7	6.1	6.8	16.5	14.7
<b>2000</b>										
June quarter(g)	14.0	11.7	12.1	16.5	20.2	4.8	5.8	n.p.	n.p.	14.9
September quarter(g)	13.6	11.4	11.9	16.8	18.9	6.0	5.8	n.p.	n.p.	14.5
December quarter(g)	13.4	11.4	11.8	16.7	19.3	5.9	6.3	n.p.	n.p.	14.6
<b>2001</b>										
March quarter(g)	r13.0	r11.9	r10.9	r17.8	r19.8	5.5	r6.2	n.p.	n.p.	14.2
June quarter(g)	13.4	11.7	12.2	17.4	20.6	5.2	6.0	n.p.	n.p.	14.9
April	13.4	11.3	12.0	17.2	20.7	5.2	5.9	n.p.	n.p.	14.8
May	13.5	11.9	12.3	17.9	20.9	4.9	5.7	n.p.	n.p.	14.9
June	13.4	11.9	12.5	17.2	20.3	5.6	6.5	n.p.	n.p.	15.0
<b>Females</b>										
1999(g)	n.a.	11.6	12.2	20.7	32.0	2.2	6.8	n.a.	36.5	n.a.
2000(g)	23.4	15.0	14.1	19.4	26.9	1.7	6.5	34.0	12.5	19.6
<b>2000</b>										
June quarter(g)	21.9	16.2	14.6	17.0	27.0	n.p.	6.6	n.p.	n.p.	19.4
September quarter(g)	22.3	17.8	14.0	25.7	22.7	n.p.	7.6	n.p.	n.p.	19.1
December quarter(g)	26.0	15.1	14.1	21.5	26.4	n.p.	6.7	n.p.	n.p.	20.3
<b>2001</b>										
March quarter(g)	r27.3	r15.4	r13.8	24.4	r30.4	n.p.	r6.0	n.p.	n.p.	r21.4
June quarter(g)	26.3	16.8	15.5	20.8	29.7	5.3	5.4	n.p.	n.p.	21.0
April	29.0	15.9	16.0	20.1	30.3	9.0	6.8	n.p.	n.p.	22.5
May	26.1	17.2	14.9	18.6	26.7	4.8	6.6	n.p.	n.p.	19.9
June	24.1	17.2	15.8	24.0	32.1	4.0	3.6	n.p.	n.p.	20.7
<b>Persons</b>										
1999(g)	n.a.	11.5	11.7	15.6	21.3	4.8	9.1	n.a.	24.2	n.a.
2000(g)	13.9	11.8	11.7	15.5	19.5	5.4	5.5	8.4	15.2	14.7
<b>2000</b>										
June quarter(g)	14.1	12.0	11.9	15.9	20.2	4.7	5.2	n.p.	n.p.	14.8
September quarter(g)	13.7	11.8	11.6	16.6	18.7	5.6	5.2	n.p.	n.p.	14.5
December quarter(g)	13.8	11.7	11.6	16.4	19.2	5.6	5.7	n.p.	n.p.	14.6
<b>2001</b>										
March quarter(g)	r13.5	12.1	10.7	17.4	r19.9	5.3	r5.6	n.p.	n.p.	14.3
June quarter(g)	13.9	12.1	12.1	17.0	20.6	5.2	5.4	n.p.	n.p.	14.9
April	13.9	11.7	11.8	16.7	20.7	5.3	5.3	n.p.	n.p.	14.9
May	13.9	12.4	12.1	17.3	20.6	4.8	5.1	n.p.	n.p.	14.9
June	13.8	12.4	12.3	16.9	20.4	5.5	5.8	n.p.	n.p.	15.0

- (a) Some rates and ratios in this table have not been published—see Explanatory notes, paragraph 21.
- (b) Persons in custody are asked their Indigenous status during reception into custody—see Explanatory notes, paragraphs 10–11.
- (c) See Appendix - Interpretation of Indigenous Statistics.
- (d) Numbers of Indigenous persons for NSW prior to September 1999 are unavailable—see Explanatory notes, paragraph 9.
- (e) Persons sentenced to full-time custody in the ACT are held in NSW prisons. The figures are a subset of the NSW figures and are NOT included in the totals for Australia—see Explanatory notes, paragraph 12.
- (f) Refers to unsentenced persons in ACT prison custody—see Explanatory notes, paragraph 12. From 2000 this may include persons sentenced for fine default only.
- (g) Figures for the quarter and year for first day of the month counts are calculated as a simple average—see Explanatory notes, paragraph 5.

# 6

## INDIGENOUS PERSONS IN PRISON CUSTODY, By Legal Status and Sentence Type(a)(b)(c)

Legal status and sentence type	NSW(d)	Vic.	Qld	SA	WA	Tas.	NT	ACT in NSW(d)(e)	ACT(f)	Aust.(e)
NUMBER ON FIRST DAY OF MONTH										
<b>Unsentenced</b>										
<b>1999(g)</b>	n.a.	24	124	52	124	8	53	n.a.	7	n.a.
<b>2000(g)</b>	214	27	154	66	133	8	69	—	6	676
<b>2000</b>										
June quarter(g)	217	27	162	69	145	8	59	1	7	694
September quarter(g)	202	30	140	69	140	7	70	—	5	662
December quarter(g)	226	29	154	75	126	7	93	1	5	715
<b>2001</b>										
March quarter(g)	236	30	155	87	161	7	94	1	10	780
June quarter(g)	264	35	170	91	173	10	79	1	8	831
April	254	33	158	83	179	9	91	2	7	814
May	279	38	172	97	175	11	73	1	10	855
June	260	35	179	94	166	9	74	1	8	825
<b>Sentenced</b>										
<b>Fine default only</b>										
<b>1999(g)</b>	n.a.	—	54	9	34	1	17	n.a.	..	n.a.
<b>2000(g)</b>	1	—	43	1	24	—	11	—	—	81
<b>2000</b>										
June quarter(g)	—	—	59	—	27	1	10	—	..	97
September quarter(g)	1	—	24	—	25	1	16	—	..	67
December quarter(g)	1	—	23	—	24	—	10	—	1	59
<b>2001</b>										
March quarter(g)	—	—	—	—	26	1	r16	—	—	r44
June quarter(g)	—	—	—	—	24	—	14	—	—	40
April	—	—	—	—	39	—	16	—	—	55
May	1	—	—	—	16	—	11	—	—	28
June	—	1	1	—	18	1	16	—	—	37
<b>Other sentenced</b>										
<b>1999(g)</b>	n.a.	98	937	144	819	29	378	n.a.	..	n.a.
<b>2000(g)</b>	928	107	878	132	819	35	318	10	..	3 217
<b>2000</b>										
June quarter(g)	941	110	886	137	820	32	325	8	..	3 252
September quarter(g)	928	104	867	140	812	38	297	12	..	3 187
December quarter(g)	912	107	850	132	832	38	302	14	..	3 173
<b>2001</b>										
March quarter(g)	920	117	819	140	832	32	r320	11	..	r3 181
June quarter(g)	949	114	918	140	860	30	342	11	..	3 353
April	949	111	892	143	854	30	333	10	..	3 312
May	941	114	927	139	854	29	332	11	..	3 336
June	957	117	936	139	871	30	361	11	..	3 411

(a) Some rates in this table have not been published—see Explanatory notes, paragraph 21.

(b) Persons in custody are asked their Indigenous status during reception into custody—see Explanatory notes, paragraphs 10–11.

(c) See Appendix - Interpretation of Indigenous Statistics.

(d) Numbers of Indigenous persons for NSW prior to September 1999 are unavailable—see Explanatory notes, paragraph 9.

(e) Persons sentenced to full-time custody in the ACT are held in NSW prisons. The figures are a subset of the NSW figures and are NOT included in the totals for Australia—see Explanatory notes, paragraph 12.

(f) Refers to unsentenced persons in ACT prison custody—see Explanatory notes, paragraph 12. From 2000 this may include persons sentenced for fine default only.

(g) Figures for the quarter and year for first day of the month counts are calculated as a simple average—see Explanatory notes, paragraph 5.

Legal status and sentence type	NSW(d)	Vic.	Qld	SA	WA	Tas.	NT	ACT in NSW(d)(e)	ACT(f)	Aust.(e)
NUMBER ON FIRST DAY OF MONTH										
<b>Total sentenced</b>										
<b>1999(g)</b>	n.a.	98	991	153	853	30	394	n.a.	..	n.a.
<b>2000(g)</b>	929	107	921	132	844	36	329	10	—	3 298
<b>2000</b>										
June quarter(g)	941	110	945	137	847	32	335	8	..	3 349
September quarter(g)	929	104	891	140	837	39	313	12	..	3 254
December quarter(g)	912	108	873	133	856	38	313	14	1	3 233
<b>2001</b>										
March quarter(g)	920	117	819	141	858	33	r336	11	—	r3 225
June quarter(g)	949	114	919	140	884	30	356	11	—	3 393
April	949	111	892	143	893	30	349	10	—	3 367
May	942	114	927	139	870	29	343	11	—	3 364
June	957	118	937	139	889	31	377	11	—	3 448
<b>Total</b>										
<b>1999(g)</b>	n.a.	122	1 116	205	977	37	447	n.a.	7	n.a.
<b>2000(g)</b>	1 143	134	1 075	199	977	43	398	10	6	3 974
<b>2000</b>										
June quarter(g)	1 158	137	1 108	207	991	40	395	9	7	4 042
September quarter(g)	1 131	135	1 031	209	977	46	383	12	5	3 916
December quarter(g)	1 138	137	1 027	208	982	44	406	15	6	3 947
<b>2001</b>										
March quarter(g)	1 157	147	974	227	1 019	41	r430	12	10	r4 005
June quarter(g)	1 214	150	1 088	232	1 057	40	436	12	8	4 224
April	1 203	144	1 050	226	1 072	39	440	12	7	4 181
May	1 221	152	1 099	236	1 045	40	416	12	10	4 219
June	1 217	153	1 116	233	1 055	40	451	12	8	4 273

(a) Some rates in this table have not been published—see Explanatory notes, paragraph 21.

(b) Persons in custody are asked their Indigenous status during reception into custody—see Explanatory Notes, paragraphs 10–11.

(c) See Appendix - Interpretation of Indigenous Statistics.

(d) Numbers of Indigenous persons for NSW prior to September 1999 are unavailable—see Explanatory notes, paragraph 9.

(e) Persons sentenced to full-time custody in the ACT are held in NSW prisons. The figures are a subset of the NSW figures and are NOT included in the totals for Australia—see Explanatory notes, paragraph 12.

(f) Refers to unsentenced persons in ACT prison custody—see Explanatory notes, paragraph 12. From 2000 this may include persons sentenced for fine default only.

(g) Figures for the quarter and year for first day of the month counts are calculated as a simple average—see Explanatory notes, paragraph 5.

## 6

INDIGENOUS PERSONS IN PRISON CUSTODY, By Legal Status and Sentence Type(a)(b)(c) *continued*

Legal status and sentence type	NSW(d)	Vic.	Qld	SA	WA	Tas.	NT	ACT in NSW(d)(e)	ACT(f)	Aust.(e)
RATES PER 100,000 ADULT INDIGENOUS POPULATION										
<b>Unsentenced</b>										
<b>1999(g)</b>	n.a.	175.2	199.4	408.1	384.5	84.2	165.3	n.a.	339.2	n.a.
<b>2000(g)</b>	336.0	195.5	238.0	508.4	400.9	82.1	213.7	—	308.6	291.7
<b>2000</b>										
June quarter(g)	340.3	191.9	251.3	530.7	436.3	85.7	180.8	n.p.	n.p.	298.3
September quarter(g)	317.8	218.3	216.2	528.2	421.2	71.4	221.4	n.p.	n.p.	286.3
December quarter(g)	354.4	208.7	237.8	574.1	381.0	71.4	294.1	n.p.	n.p.	309.0
<b>2001</b>										
March quarter(g)	362.2	209.7	232.7	648.1	474.6	76.6	r291.4	n.p.	n.p.	r328.8
June quarter(g)	405.1	249.8	255.3	683.0	509.9	100.9	245.0	n.p.	n.p.	350.5
April	389.3	233.3	237.7	620.7	526.6	94.0	281.1	n.p.	n.p.	343.2
May	427.6	268.6	258.8	725.4	514.8	114.9	225.5	n.p.	n.p.	360.4
June	398.5	247.4	269.3	703.0	488.4	94.0	228.6	n.p.	n.p.	347.8
<b>Sentenced</b>										
<b>Fine default only</b>										
<b>1999(g)</b>	n.a.	—	87.1	70.3	105.9	4.6	52.6	n.a.	..	n.a.
<b>2000(g)</b>	0.9	1.2	66.4	5.1	73.1	3.6	35.6	—	—	34.7
<b>2000</b>										
June quarter(g)	—	—	91.3	—	81.4	7.1	30.5	n.p.	..	41.6
September quarter(g)	2.1	2.4	37.1	—	74.4	7.1	50.6	n.p.	..	29.0
December quarter(g)	1.0	2.4	35.1	2.6	73.4	—	32.7	n.p.	n.p.	25.7
<b>2001</b>										
March quarter(g)	—	—	0.5	2.5	76.5	10.4	r49.4	n.p.	n.p.	r18.4
June quarter(g)	0.5	2.4	0.5	—	71.6	3.5	44.3	n.p.	n.p.	16.9
April	—	—	—	—	114.7	—	49.4	n.p.	n.p.	23.2
May	1.5	—	—	—	47.1	—	34.0	n.p.	n.p.	11.8
June	—	7.1	1.5	—	53.0	10.4	49.4	n.p.	n.p.	15.6
<b>Other sentenced</b>										
<b>1999(g)</b>	n.a.	725.5	1 504.7	1 134.8	2 539.8	321.2	1 185.2	n.a.	..	n.a.
<b>2000(g)</b>	1 457.4	770.2	1 359.2	1 007.9	2 471.2	378.3	985.5	488.7	..	1 387.3
<b>2000</b>										
June quarter(g)	1 478.3	794.2	1 371.8	1 051.2	2 472.2	339.0	991.2	n.p.	..	1 398.7
September quarter(g)	1 456.9	748.6	1 342.4	1 071.6	2 450.0	410.4	939.3	n.p.	..	1 377.7
December quarter(g)	1 431.7	772.6	1 316.1	1 013.0	2 508.3	403.3	956.1	n.p.	..	1 371.9
<b>2001</b>										
March quarter(g)	1 410.5	829.4	1 232.3	1 049.5	2 446.7	337.6	r988.4	n.p.	..	r1341.0
June quarter(g)	1 454.4	805.8	1 381.8	1 049.5	2 529.0	309.8	1 056.3	n.p.	..	1 413.6
April	1 454.4	784.6	1 342.2	1 069.4	2 512.4	313.3	1 028.5	n.p.	..	1 396.3
May	1 442.1	805.8	1 394.8	1 039.5	2 512.4	302.8	1 025.5	n.p.	..	1 406.4
June	1 466.6	827.0	1 408.4	1 039.5	2 562.4	313.3	1 115.0	n.p.	..	1 438.0

(a) Some rates in this table have not been published—see Explanatory notes, paragraph 21.

(b) Persons in custody are asked their Indigenous status during reception into custody—see Explanatory notes, paragraphs 10–11.

(c) See Appendix - Interpretation of Indigenous Statistics.

(d) Numbers of Indigenous persons for NSW prior to September 1999 are unavailable—see Explanatory notes, paragraph 9.

(e) Persons sentenced to full-time custody in the ACT are held in NSW prisons. The figures are a subset of the NSW figures and are NOT included in the totals for Australia—see Explanatory notes, paragraph 12.

(f) Refers to unsentenced persons in ACT prison custody—see Explanatory notes, paragraph 12. From 2000 this may include persons sentenced for fine default only.

(g) Figures for the quarter and year for first day of the month counts are calculated on a simple average—see Explanatory notes, paragraph 5.



Legal status and sentence type	NSW(d)	Vic.	Qld	SA	WA	Tas.	NT	ACT in NSW(d)(e)	ACT(f)	Aust.(e)
RATES PER 100,000 ADULT INDIGENOUS POPULATION										
<b>Total sentenced</b>										
<b>1999(g)</b>	n.a.	725.5	1 591.8	1 205.1	2 645.7	328.6	1 237.9	n.a.	..	n.a.
<b>2000(g)</b>	1 458.3	771.4	1 425.6	1 013.0	2 544.3	381.9	1 021.0	488.7	—	1 422.0
<b>2000</b>										
June quarter(g)	1 478.3	794.2	1 463.1	1 051.2	2 553.6	346.2	1 021.6	n.p.	..	1 440.2
September quarter(g)	1 458.9	751.0	1 379.6	1 071.6	2 524.4	417.6	989.9	n.p.	..	1 406.7
December quarter(g)	1 432.8	775.0	1 351.2	1 015.5	2 581.7	403.3	988.8	n.p.	n.p.	1 397.6
<b>2001</b>										
March quarter(g)	1 410.5	829.4	1 232.8	1 051.9	2 523.1	348.1	r1037.8	n.p.	n.p.	r1359.4
June quarter(g)	1 454.9	808.2	1 382.3	1 049.5	2 600.6	313.3	1 100.6	n.p.	n.p.	1 430.4
April	1 454.4	784.6	1 342.2	1 069.4	2 627.1	313.3	1 078.0	n.p.	n.p.	1 419.5
May	1 443.7	805.8	1 394.8	1 039.5	2 559.4	302.8	1 059.4	n.p.	n.p.	1 418.2
June	1 466.6	834.1	1 409.9	1 039.5	2 615.3	323.7	1 164.4	n.p.	n.p.	1 453.6
<b>Total</b>										
<b>1999(g)</b>	n.a.	900.7	1 791.2	1 613.2	3 030.2	412.8	1 402.7	n.a.	339.2	n.a.
<b>2000(g)</b>	1 794.3	966.9	1 663.6	1 521.4	2 945.2	464.0	1 234.7	510.1	317.2	1 713.7
<b>2000</b>										
June quarter(g)	1 818.6	986.1	1 714.4	1 582.0	2 989.9	431.8	1 202.4	n.p.	n.p.	1 738.6
September quarter(g)	1 776.7	969.3	1 595.7	1 599.8	2 945.7	488.9	1 211.3	n.p.	n.p.	1 693.0
December quarter(g)	1 787.2	983.7	1 589.0	1 589.6	2 962.8	474.7	1 282.9	n.p.	n.p.	1 706.6
<b>2001</b>										
March quarter(g)	1 772.6	1 039.1	1 465.6	1 700.1	2 997.8	424.7	r1 329.2	n.p.	n.p.	r1 688.3
June quarter(g)	1 860.0	1 057.9	1 637.6	1 732.5	3 110.5	414.2	1 345.6	n.p.	n.p.	1 780.9
April	1 843.6	1 017.9	1 579.9	1 690.1	3 153.7	407.3	1 359.0	n.p.	n.p.	1 762.6
May	1 871.2	1 074.4	1 653.7	1 764.9	3 074.3	417.7	1 284.9	n.p.	n.p.	1 778.6
June	1 865.1	1 081.5	1 679.2	1 742.4	3 103.7	417.7	1 393.0	n.p.	n.p.	1 801.4

(a) Some rates in this table have not been published—see Explanatory notes, paragraph 21.

(b) Persons in custody are asked their Indigenous status during reception into custody—see Explanatory notes, paragraphs 10–11.

(c) See Appendix - Interpretation of Indigenous Statistics.

(d) Numbers of Indigenous persons for NSW prior to September 1999 are unavailable—see Explanatory notes, paragraph 9.

(e) Persons sentenced to full-time custody in the ACT are held in NSW prisons. The figures are a subset of the NSW figures and are NOT included in the totals for Australia—see Explanatory notes, paragraph 12.

(f) Refers to unsentenced persons in ACT prison custody—see Explanatory notes, paragraph 12.

(g) Figures for the quarter and year for first day of the month counts are calculated on a simple average—see Explanatory notes, paragraph 5.

# 7

## PERSONS IN PERIODIC DETENTION, By Sex(a)

Sex	NSW	ACT	Aust.
AVERAGE DAILY NUMBER			
<b>Males</b>			
<b>1999</b>	1 190	62	1 252
<b>2000</b>	1 107	69	1 176
<b>2000</b>			
June quarter	1 154	66	1 220
September quarter	1 107	72	1 178
December quarter	1 010	75	1 084
<b>2001</b>			
March quarter	952	71	1 023
June quarter	974	65	1 039
April	968	66	1 034
May	968	64	1 032
June	986	65	1 051
<b>Females</b>			
<b>1999</b>	114	3	117
<b>2000</b>	109	7	115
<b>2000</b>			
June quarter	110	6	116
September quarter	111	6	117
December quarter	102	9	110
<b>2001</b>			
March quarter	98	6	104
June quarter	85	4	89
April	85	5	90
May	85	4	89
June	84	4	88
<b>Persons</b>			
<b>1999</b>	1 304	65	1 369
<b>2000</b>	1 216	75	1 291
<b>2000</b>			
June quarter	1 264	72	1 336
September quarter	1 218	77	1 295
December quarter	1 111	83	1 195
<b>2001</b>			
March quarter	1 049	78	1 127
June quarter	1 059	69	1 127
April	1 053	71	1 124
May	1 053	68	1 121
June	1 070	69	1 139

(a) See Glossary for definition of Periodic detention.

# 7

## PERSONS IN PERIODIC DETENTION, By Sex(a) *continued*

Sex	NSW	ACT	Aust.
RATE PER 100,000 ADULT POPULATION			
<b>Males</b>			
<b>1999</b>	50.3	53.0	17.8
<b>2000</b>	46.2	60.0	16.5
<b>2000</b>			
June quarter	48.2	57.5	17.1
September quarter	46.2	62.2	16.5
December quarter	42.0	64.9	15.1
<b>2001</b>			
March quarter	39.4	61.9	14.2
June quarter	40.2	55.7	14.4
April	40.0	56.5	14.3
May	40.0	54.8	14.3
June	40.7	55.9	14.5
<b>Females</b>			
<b>1999</b>	4.6	2.8	1.6
<b>2000</b>	4.4	5.3	1.6
<b>2000</b>			
June quarter	4.5	4.7	1.6
September quarter	4.5	5.0	1.6
December quarter	4.1	7.3	1.5
<b>2001</b>			
March quarter	3.9	5.5	1.4
June quarter	3.4	3.6	1.2
April	3.4	4.2	1.2
May	3.4	3.4	1.2
June	3.4	3.2	1.2
<b>Persons</b>			
<b>1999</b>	27.1	27.6	9.6
<b>2000</b>	25.0	32.3	8.9
<b>2000</b>			
June quarter	26.0	30.8	9.2
September quarter	25.0	33.3	8.9
December quarter	22.8	35.7	8.2
<b>2001</b>			
March quarter	21.4	33.3	7.7
June quarter	21.5	29.3	7.7
April	21.4	30.1	7.7
May	21.4	28.8	7.6
June	21.8	29.2	7.8

(a) See Glossary for definition of Periodic detention.

## NUMBER ON FIRST DAY OF MONTH.....

	NSW	Vic.	Qld	SA	WA	Tas.	NT	ACT	Aust.
MALES									
<b>1999(b)</b>	262	72	98	27	101	1	16	4	581
<b>2000(b)</b>	296	76	84	24	120	2	37	5	645
<b>2000</b>									
June quarter(b)	293	74	88	26	112	2	19	5	619
September quarter(b)	301	73	89	23	130	2	39	6	664
December quarter(b)	303	82	75	21	129	4	75	6	694
<b>2001</b>									
March quarter(b)	288	86	72	19	131	5	74	5	682
June quarter(b)	285	81	71	20	131	3	109	6	706
April	282	82	71	20	130	3	92	6	686
May	282	80	71	21	129	3	115	6	707
June	290	82	71	20	133	2	121	7	726
FEMALES									
<b>1999(b)</b>	31	5	13	4	9	2	2	1	66
<b>2000(b)</b>	27	5	13	6	13	2	—	1	67
<b>2000</b>									
June quarter(b)	29	6	13	6	13	2	—	—	68
September quarter(b)	27	3	11	7	15	3	—	—	67
December quarter(b)	27	6	12	5	13	3	—	1	68
<b>2001</b>									
March quarter(b)	31	7	14	5	15	2	—	—	72
June quarter(b)	31	5	15	4	15	1	—	—	72
April	32	6	13	4	15	1	—	—	71
May	30	5	16	4	14	1	—	—	70
June	32	5	16	4	16	—	1	—	74
PERSONS									
<b>1999(b)</b>	293	78	111	31	110	2	18	5	647
<b>2000(b)</b>	323	82	97	30	133	5	38	6	712
<b>2000</b>									
June quarter(b)	322	79	101	32	126	4	19	5	687
September quarter(b)	328	76	100	30	145	5	39	6	731
December quarter(b)	330	88	88	26	142	7	75	7	762
<b>2001</b>									
March quarter(b)	319	93	86	24	146	7	74	5	754
June quarter(b)	316	87	86	24	146	3	110	6	778
April	314	88	84	24	145	4	92	6	757
May	312	85	87	25	143	4	115	6	777
June	322	87	87	24	149	2	122	7	800

(a) See Glossary for definition of Federal sentenced prisoner. 'ACT in NSW' in other tables refers to prisoners held in NSW and sentenced in the ACT. This table shows prisoners by the State or Territory in which they were sentenced, not where they were held in custody, so 'ACT in NSW' is not shown here.

(b) Figures for the quarter and year for first day of the month counts are calculated as a simple average—see Explanatory notes, paragraph 5.

Sex	NSW	Vic.	Qld	SA	WA	Tas.	NT	ACT	Aust.
NUMBER ON FIRST DAY OF MONTH(b)									
<b>Males</b>									
1999									
September quarter	15 453	6 225	15 496	5 393	3 173	1 051	522	911	48 224
December quarter	15 745	6 108	14 999	5 097	3 242	1 060	518	863	47 632
2000									
March quarter	16 152	5 599	15 284	4 913	3 258	970	514	873	47 563
June quarter	16 356	5 362	15 766	4 598	3 429	952	516	879	47 858
<b>Females</b>									
1999									
September quarter	2 759	1 352	4 264	1 817	950	207	63	192	11 604
December quarter	2 817	1 292	4 169	1 691	950	213	69	176	11 377
2000									
March quarter	2 883	1 200	4 228	1 580	899	196	75	152	11 213
June quarter	2 891	1 149	4 424	1 353	884	199	79	165	11 144
<b>Unknown</b>									
1999									
September quarter	54	77	—	72	—	—	—	—	203
December quarter	67	64	—	49	—	—	—	—	180
2000									
March quarter	87	47	—	44	—	—	—	—	178
June quarter	107	50	—	30	—	—	—	—	187
<b>Persons</b>									
1999									
September quarter	18 266	7 654	19 760	7 282	4 123	1 258	585	1 103	60 031
December quarter	18 629	7 463	19 168	6 836	4 192	1 273	587	1 040	59 188
2000									
March quarter	19 122	6 846	19 511	6 537	4 157	1 166	589	1 026	58 954
June quarter	19 354	6 561	20 189	5 982	4 313	1 152	595	1 044	59 190
RATE PER 100,000 ADULT POPULATION									
<b>Males</b>									
1999									
September quarter	644.9	345.7	1 159.2	965.5	454.4	605.4	708.4	792.5	674.2
December quarter	657.0	339.2	1 122.0	912.5	464.3	610.6	703.0	750.7	665.9
2000									
March quarter	674.0	310.9	1 143.3	879.6	466.6	558.7	697.6	759.4	664.9
June quarter	682.5	297.8	1 179.4	823.2	491.1	548.4	700.3	764.6	669.1
<b>Females</b>									
1999									
September quarter	111.6	72.0	314.3	311.2	136.0	112.9	98.1	162.8	157.8
December quarter	114.0	68.8	307.3	289.7	136.0	116.2	107.4	149.3	154.7
2000									
March quarter	116.7	63.9	311.6	270.6	128.7	106.9	116.8	128.9	152.5
June quarter	117.0	61.2	326.1	231.8	126.5	108.6	123.0	139.9	151.5
<b>Persons</b>									
1999									
September quarter	375.2	208.1	733.6	637.5	295.2	352.5	424.2	473.7	413.8
December quarter	382.7	202.9	711.7	598.4	300.1	356.7	425.7	446.6	408.0
2000									
March quarter	392.8	186.1	724.4	572.2	297.6	326.7	427.1	440.6	406.4
June quarter	397.6	178.4	749.6	523.7	308.8	322.8	431.5	448.3	408.0

(a) These statistics have a financial year reference period, therefore the tables are updated annually in the September quarter publication.

(b) Figures for each quarter for first day of the month counts are calculated as a simple average.

NUMBER ON FIRST DAY OF MONTH(c).....

Type of order	NSW	Vic.	Qld	SA	WA	Tas.	NT	ACT	Aust.
SEPTEMBER QUARTER 1999									
Restricted movement	154	—	284	113	94	..	17	..	662
Reparation									
Fine option	392	1 868	11 153	3 347	356	151	153	..	17 420
Community service	5 252	1 217	2 112	1 236	1 905	548	80	178	12 528
Supervision (compliance)									
Parole	3 433	831	1 646	996	969	89	120	109	8 193
Bail	—	—	—	142	—	..	—	150	292
Sentenced probation	10 977	4 006	6 517	2 269	2 332	667	227	665	27 660
<b>Persons</b>	<b>18 266</b>	<b>7 654</b>	<b>19 760</b>	<b>7 282</b>	<b>4 123</b>	<b>1 258</b>	<b>585</b>	<b>1 103</b>	<b>60 031</b>
DECEMBER QUARTER 1999									
Restricted movement	162	—	299	133	88	..	13	..	695
Reparation									
Fine option	392	1 773	10 423	2 845	375	151	139	..	16 098
Community service	5 360	1 124	2 040	1 147	1 868	531	76	157	12 303
Supervision (compliance)									
Parole	3 542	870	1 598	978	1 013	97	130	105	8 333
Bail	—	—	—	154	—	..	2	147	303
Sentenced probation	11 187	3 966	6 659	2 355	2 352	685	235	630	28 069
<b>Persons</b>	<b>18 629</b>	<b>7 463</b>	<b>19 168</b>	<b>6 836</b>	<b>4 192</b>	<b>1 273</b>	<b>587</b>	<b>1 040</b>	<b>59 188</b>
MARCH QUARTER 2000									
Restricted movement	196	—	308	140	80	..	18	..	742
Reparation									
Fine option	355	1 420	10 622	2 386	337	130	164	..	15 414
Community service	5 613	967	2 008	1 087	1 795	453	73	156	12 152
Supervision (compliance)									
Parole	3 649	904	1 577	1 023	1 042	84	124	102	8 505
Bail	—	—	—	191	—	..	2	152	345
Sentenced probation	11 459	3 756	6 871	2 416	2 377	655	221	616	28 371
<b>Persons</b>	<b>19 122</b>	<b>6 846</b>	<b>19 511</b>	<b>6 537</b>	<b>4 157</b>	<b>1 166</b>	<b>589</b>	<b>1 026</b>	<b>58 954</b>
JUNE QUARTER 2000									
Restricted movement	209	—	300	136	87	..	22	..	754
Reparation									
Fine option	309	1 147	11 133	1 418	434	117	171	..	14 729
Community service	5 861	950	2 086	1 425	1 770	452	88	153	12 785
Supervision (compliance)									
Parole	3 709	916	1 601	1 036	1 089	76	118	108	8 653
Bail	—	—	—	232	—	..	3	135	370
Sentenced probation	11 451	3 718	7 139	2 439	2 441	647	214	648	28 697
<b>Persons</b>	<b>19 354</b>	<b>6 561</b>	<b>20 189</b>	<b>5 982</b>	<b>4 313</b>	<b>1 152</b>	<b>595</b>	<b>1 044</b>	<b>59 190</b>

(a) If a person has more than one type of order, they are counted more than once in this table. If a person has more than one order of the same order type, they are counted once in the order type.

(b) These statistics have a financial year reference period, therefore the tables are updated annually in the September quarter publication.

(c) Figures for each quarter for first day of the month counts are calculated as a simple average.

# EXPLANATORY NOTES

## INTRODUCTION

**1** This publication presents statistical series on persons held in either adult corrective services custody or who are serving community-based orders in Australia. It contains data on the number of persons by their sex, type of custody, legal status and sentence type; the number of sentenced persons received into corrective services custody each month; the number of Indigenous persons in corrective services custody by their sex, legal status and sentence type, and the number of Federal prisoners each month.

**2** Statistics presented in this publication are compiled in three ways:

- Average daily prisoner population: Counts taken on each day of the month are summed and divided by the number of days in that month to determine the average daily prisoner population for that month. The average daily periodic detainee population is a count of persons on periodic detention on each day a centre is open, divided by the number of days a centre is open.
- Sentenced prisoner reception figures: Counts are provided each month of the number of receptions where a prisoner is received as a sentenced prisoner plus the number of changes of legal status from unsentenced to sentenced.
- First day of the month prisoner population: Counts of prisoner populations, taken on or near the first day of the month (see Explanatory notes, paragraph 4).

**3** Although national standards and classifications are used in the compilation of these statistics, some discrepancies remain between the States and Territories. These are due to legislative and procedural differences between jurisdictions and the way that these differences are reflected in agencies' administrative data systems. As part of its development strategy, the ABS is working with corrective services agencies to minimise the effect of these differences.

## REFERENCE PERIOD/DATE

**4** For the average daily prisoner population and the sentenced prisoner receptions counts, the reference period is the complete reference month. For all other information in the publication, the reference date is the first day of the month. However, not all States and Territories report strictly according to this 'first day of the month' rule:

- The Western Australian and Victorian prison population and Australian Capital Territory prisoners in New South Wales prisons are counted as at midnight on the last day of the month. In these cases the figures provided are taken to represent the prison population at the beginning of the following month to align with practices in other States and Territories.
- The New South Wales prison population is counted on the first Sunday of the month.
- In January 1999 ACT Corrections commenced sending surplus unsentenced prisoners to New South Wales prisons. These unsentenced ACT in NSW prisoners are shown on a daily average basis in Table 3.

**5** Calculation of figures for the entire quarter and entire year varies depending on the counting unit and method of counting prisoners, these figures may be subject to rounding:

- Average daily figures: Figures are calculated by weighting the average according to the number of days in each month or year.
- First day of the month: Figures are simple averages. Quarterly figures for each month are added and the total is divided by three; for yearly figures, the figures for each month are added and the total divided by twelve.
- Sentenced receptions: Figures are totals of each month.

### SCOPE

**6** The scope of the statistics in this publication includes all persons remanded or sentenced to adult custodial corrective services agencies or who are serving community-based orders in each State and Territory in Australia.

**7** In all States and Territories except Victoria, Queensland and Tasmania, persons remanded or sentenced to adult custody are aged 18 years and over. Persons under 18 years are treated as juveniles in most Australian courts and are not remanded or sentenced to custody in adult prisons, other than in exceptional circumstances. However, in Victoria, Queensland and Tasmania 'adult' refers to persons aged 17 years and over.

### DATA SOURCE

**8** Statistics in this publication are derived from information collected by the ABS from administrative records held by corrective services agencies within each State and Territory. Statistics on Federal prisoners are derived from records kept by the Criminal Law Division of the Commonwealth Attorney-General's Department.

**9** Statistics marked 'n.a.' in tables 3, 5 and 6 are not available for inclusion in this publication. New South Wales Department of Corrective Services modified its computer system to enable provision of counts of Indigenous persons in custody from July 1999. Australian Capital Territory Corrective Services Department has advised that the numbers of Indigenous prisoners sentenced in Australian Capital Territory courts and held in New South Wales prisons had been under reported. This under reporting was resolved from April 2000.

### INDIGENOUS IDENTIFICATION

**10** In all States and Territories persons are asked during entry into custody whether they identify as Aboriginal or Torres Strait Islander. It is uncommon for corrective services agencies to collect Indigenous status information from sources other than the person's own identification.

**11** Some persons in custody are recorded as of unknown Indigenous status on corrective services agencies' information systems, but unknown Indigenous status has not been provided for this collection. Such persons are designated as non-Indigenous. It is intended that unknown Indigenous status will be collected from these systems in future.

### AUSTRALIAN CAPITAL TERRITORY PRISONERS

**12** The Australian Capital Territory has a detention centre for unsentenced prisoners and a periodic detention centre, but does not have a facility to hold persons sentenced to full-time custody. Persons sentenced to full-time custody in Australian Capital Territory criminal courts are held in New South Wales prisons.

**13** During 2000 the Australian Capital Territory commenced detaining prisoners sentenced for fine default only at their centre for unsentenced persons. To provide greater understanding of the number of prisoners attributed to the Australian Capital Territory, while presenting an accurate picture of the New South Wales prisoner population, statistics relating to Australian Capital Territory prisoners in New South Wales prisons are presented as a subset of the New South Wales figures.



### RATES AND RATIOS

**14** Imprisonment rates enable comparison of prisoner numbers across States and Territories. Prisoner rates are expressed per 100,000 adult population.

**15** For the purpose of this publication the population figures used in the calculation of rates are for persons aged 18 years and over for all States and Territories except Victoria, Queensland and Tasmania where the population used is persons aged 17 and over (see Explanatory Notes, paragraph 7).

**16** Rates for the Indigenous adult population in this publication are based on revised projections for 30 June 2001 (refer *Experimental Projections of the Aboriginal and Torres Strait Islander Population 30 June 1996 to 30 June 2006* (Cat. no. 3231.0)). These projections are in turn based on the results of the 1996 Census of Population and Housing.

**17** Two series of these projections have been published. The so-called 'higher series' takes into account a possible change in propensity for people to identify themselves as Indigenous since the last Population Census and estimates this from the last inter-censal period. The lower series assumes no such change has taken place since 1996. The lower of the two series was used in calculating rates for the Indigenous adult population in this publication. This is because, after discussions with representatives of Corrective Services agencies, it was felt that the propensity to identify as Indigenous has not increased to the same extent in the prison environment as might have occurred in the wider community.

**18** Rates for the total adult prisoner population are calculated using the Estimated Resident Population (ERP) for each of the States and Territories (refer *Population by Age and Sex, Australian States and Territories* (Cat. no. 3201.0)). As the population changes over time the denominator used for the calculation of rates varies, depending on the reference period. Rates are calculated using ERP for two quarters prior to their respective quarters. Thus for the June quarter 2001, ERP for the December quarter 2000 was used in the calculation of rates. This approach uses the latest ERP available at the time of publication.

**19** The ratio of imprisonment rates of Indigenous persons to non-Indigenous persons is calculated by dividing the Indigenous imprisonment rate for each period and State or Territory by the corresponding non-Indigenous imprisonment rate.

**20** The ratio indicates the extent to which the imprisonment rates of Indigenous persons exceed the imprisonment rates of non-Indigenous persons. A ratio of 20.0 indicates that, for the given State or Territory, the imprisonment rate of Indigenous persons per 100,000 adult population is 20 times that of the imprisonment rate of non-Indigenous persons.

**21** In some instances Indigenous rates and ratios have not been published. Where this occurs, the cell concerned contains the symbol 'n.p.' This happens where, either the number of persons in custody is less than 10, or where the population on which the rate is calculated is less than 5,000. This has been done because such rates and ratios vary widely from month to month with small variations in numbers of persons, and therefore may give an inaccurate reflection of the relative involvement of Indigenous persons in custody.

## EXPLANATORY NOTES *continued*

---

### RELATED PUBLICATIONS

#### ABS publications

**22** Other ABS publications which may be of interest include:

*Australian Standard Offence Classification, 1997 (ASOC)* (Cat. no. 1234.0)—irregular

*Crime and Safety, Australia, April 1998* (Cat. no. 4509.0)—irregular

*Higher Criminal Courts, Australia, 1999-2000* (Cat. no. 4513.0)—annual

*Prisoners in Australia, 2000* (Cat. no. 4517.0)—annual

*Recorded Crime, Australia, 2000* (Cat. no. 4510.0)—annual

**23** Current publications produced by the ABS are listed in the *Catalogue of Publications and Products* (Cat. no. 1101.0). The ABS also issues, on Tuesdays and Fridays, a *Release Advice* (Cat. no. 1105.0) which lists publications to be released in the next few days. The *Catalogue* and *Release Advice* are available from any ABS office, and at our website: <http://www.abs.gov.au>.

## APPENDIX Interpretation of Indigenous Statistics

---

### INTRODUCTION

Tables 5 and 6 in this publication provide nationally comparable statistics on imprisonment of Aboriginal and Torres Strait Islander (Indigenous) people. There are a number of issues that bear on the statistical measures of Indigenous imprisonment. This technical appendix provides advice on how these statistics should be interpreted.

### NUMBERS

The first and most basic measure of Indigenous imprisonment is the *number of persons imprisoned*. Imprisoned persons are classified as Indigenous if they identify themselves as Aboriginal or Torres Strait Islander at the time they are received into prison custody. These statistics in *Corrective Services Australia* are derived from administrative records held by corrective services agencies in each jurisdiction. The accuracy of the Indigenous component of the statistics is dependent upon the quality of the information collected by these agencies.

### PROPORTIONS

The second measure is the Indigenous *proportion of the prisoner population*. This relates the number of Indigenous persons in custody to the total number of persons in custody, and provides a basis for comparing the composition of the prison population across jurisdictions.

### RATES

The third measure of Indigenous imprisonment is the *rate of imprisonment*, that is the number of Indigenous prisoners per 100,000 adults in the Indigenous population. The number of persons imprisoned in any jurisdiction is partly a function of the size of the population in that jurisdiction. All other things being equal, a jurisdiction such as the Northern Territory with a large Indigenous population will have a larger number of Indigenous prisoners than a jurisdiction such as Tasmania with a small Indigenous population. The rate of imprisonment provides a basis for comparing the relative likelihood that any Indigenous adult in a State or Territory will be imprisoned.

### RATIOS

The fourth measure of Indigenous imprisonment is the *ratio of Indigenous to non-Indigenous imprisonment*. Australian States and Territories have widely varying rates of imprisonment. Hence, the likelihood that any Indigenous adult will be imprisoned in any jurisdiction is partly a function of the overall likelihood of imprisonment in that jurisdiction. This ratio provides a measure of how much more likely it is that an Indigenous adult in a particular jurisdiction will be imprisoned compared with his or her non-Indigenous counterparts.

## GLOSSARY

---

<b>Corrective services custody</b>	Confinement in a place intended primarily for the purpose of confining prisoners, such as a prison, prison farm, Periodic Detention Centre or Community Custody Centre.
<b>Community-based corrections</b>	This refers to the community-based management of court-ordered sanctions, post-prison administrative arrangements and fine conversions for offenders, which principally involve the provision of one or more of the following activities: supervision, programmes or community work.
<b>Federal sentenced prisoner</b>	Persons charged and sentenced under a Commonwealth statute. For the purposes of this publication Federal sentenced prisoners are those persons who are recognised by the Criminal Law Division of the Commonwealth Attorney-General's Department as having been charged and sentenced under a Commonwealth statute. Federal sentenced prisoners are counted by the State or Territory in which they were sentenced, not where they were held in custody.
<b>Fine default only</b>	A sentence type indicating that, at the time, the prisoner is serving a sentence for default of a fine and nothing else.
<b>Full-time custody</b>	A type of custody where a prisoner is required to be held in custody on a full-time basis.
<b>Indigenous prisoner</b>	A prisoner who identifies as either Aboriginal or Torres Strait Islander.
<b>Legal status</b>	An offender may be either sentenced or unsentenced depending on the warrant(s) or court order(s) which provide the legal basis for the detention of the offender in custody.
<b>Open custody</b>	A custodial regime for managing prisoners which does not require them to be confined by a secure perimeter physical barrier, irrespective of whether a physical barrier exists.
<b>Other sentenced</b>	A sentence type indicating that, at the time, a person is serving a sentence other than, or in addition to, a fine default sentence.
<b>Periodic detention</b>	A type of custody or order where a sentenced prisoner is required to be held in custody for two consecutive days in a one-week period.
<b>Prisoner</b>	A person held in custody. For the purposes of this collection, prisoners are those whose confinement is the responsibility of a corrective services agency.
<b>Reparation</b>	Reparation refers to all offenders with a community service order or fine option that requires them to undertake unpaid work.
<b>Restricted movement</b>	This refers to offenders who are subject to a system of restricted movement including supervision and/or electronic monitoring.
<b>Secure custody</b>	A custodial regime for managing prisoners that requires them to be confined by a secure physical barrier.
<b>Sentenced</b>	A legal status indicating that a person has received a custodial order from a court in response to a conviction for a criminal offence.

**Sentenced prisoner reception** Includes persons who enter corrective services custody from the community, having received a sentence of imprisonment as an outcome of a court proceeding. It also includes persons who are sentenced to custody while in custody on remand (i.e. change status from a remand to a sentenced prisoner). Sentenced prisoners in custody who receive a further sentence of imprisonment are not counted as sentenced receptions.

Two types of sentenced prisoner reception are distinguished:

- A *fine default only* reception is a sentenced reception where a person enters custody as a result of defaulting on the payment of a fine.
- An *other sentenced reception* is a sentenced reception (including changes of status from unsentenced to sentenced) for anything other than a fine default only reception.

Note that Victorian reception figures do not include prisoners who change status from unsentenced to sentenced in the period.

**Supervision (compliance)** This includes community-based orders other than those categorised as restricted movement or reparation (e.g. parole, bail and sentenced probation).

**Unsentenced** A legal status indicating that a person is confined to custody while awaiting the outcome of their trial. Some sentenced prisoners may also be "remanded in custody", (i.e. are unsentenced) in relation to other offences pending a court hearing. In such cases, these prisoners are counted as sentenced.





## FOR MORE INFORMATION...

- INTERNET* **www.abs.gov.au** the ABS web site is the best place to start for access to summary data from our latest publications, information about the ABS, advice about upcoming releases, our catalogue, and Australia Now—a statistical profile.
- LIBRARY* A range of ABS publications is available from public and tertiary libraries Australia-wide. Contact your nearest library to determine whether it has the ABS statistics you require, or visit our web site for a list of libraries.
- CPI INFOLINE* For current and historical Consumer Price Index data, call 1902 981 074 (call cost 77c per minute).
- DIAL-A-STATISTIC* For the latest figures for National Accounts, Balance of Payments, Labour Force, Average Weekly Earnings, Estimated Resident Population and the Consumer Price Index call 1900 986 400 (call cost 77c per minute).

## INFORMATION SERVICE

Data which have been published and can be provided within five minutes are free of charge. Our information consultants can also help you to access the full range of ABS information—ABS user-pays services can be tailored to your needs, time frame and budget. Publications may be purchased. Specialists are on hand to help you with analytical or methodological advice.

- PHONE* **1300 135 070**
- EMAIL* **client.services@abs.gov.au**
- FAX* 1300 135 211
- POST* Client Services, ABS, GPO Box 796, Sydney 1041

## WHY NOT SUBSCRIBE?

ABS subscription services provide regular, convenient and prompt deliveries of ABS publications and products as they are released. Email delivery of monthly and quarterly publications is available.

- PHONE* 1300 366 323
- EMAIL* subscriptions@abs.gov.au
- FAX* 03 9615 7848
- POST* Subscription Services, ABS, GPO Box 2796Y, Melbourne 3001



2451200006015  
ISSN 1440-5997

RRP \$21.00